

HYSPLIT and the Role of NWS During HAZMAT Events

All-Hazards Conference

Oct. 21, 2008



Overview

- HYSPLIT
 - Today
 - Tomorrow

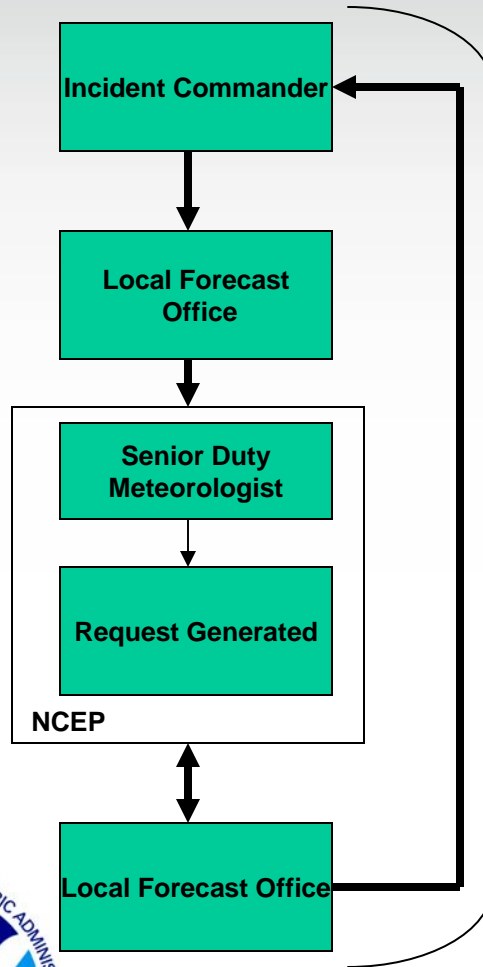


HYSPLIT Response

- Today
 - NCEP dependent
 - Local and state relationship
 - Staffing
 - Training and experience



HYSPLIT



– Issues

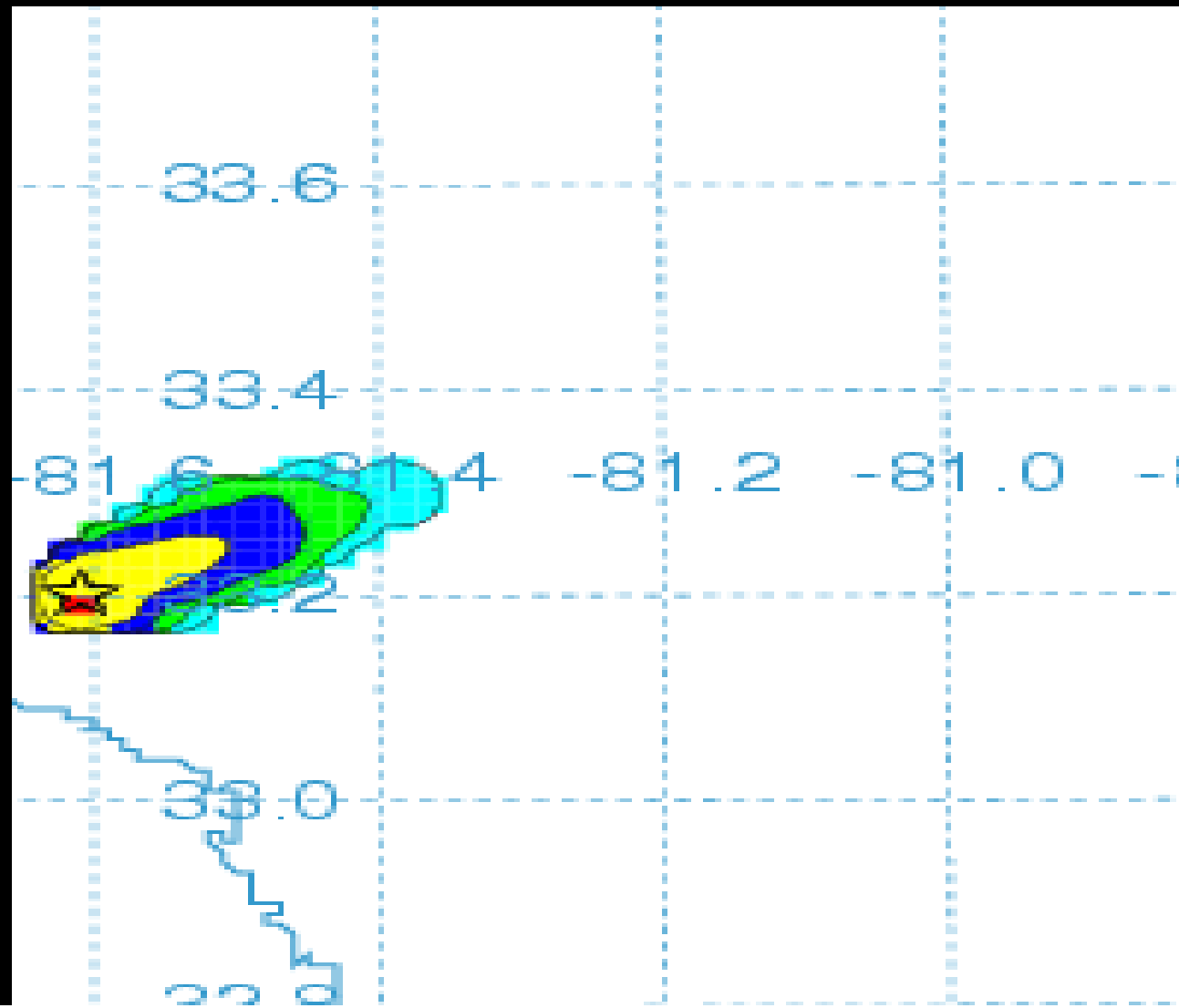
- Timeliness

–>10 minutes

- Output Scale

>10
minutes



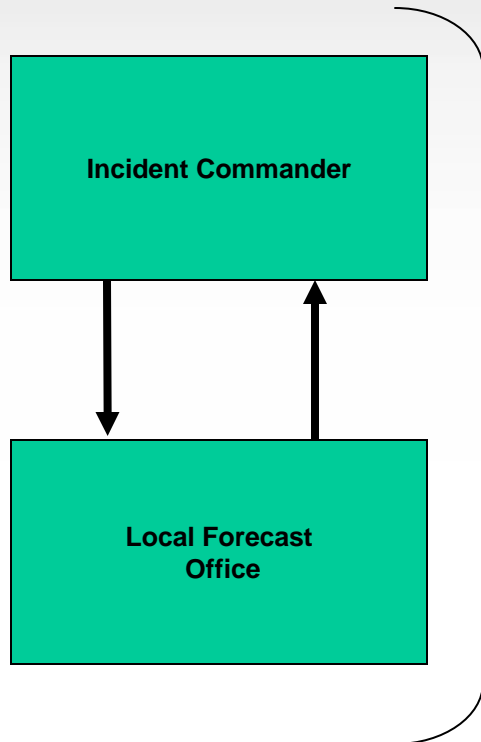


HYSPLIT Response

- Tomorrow
 - Standard approach
 - Web-based, Local office runs
 - Enhance local and state relationship
 - Staffing
 - Training



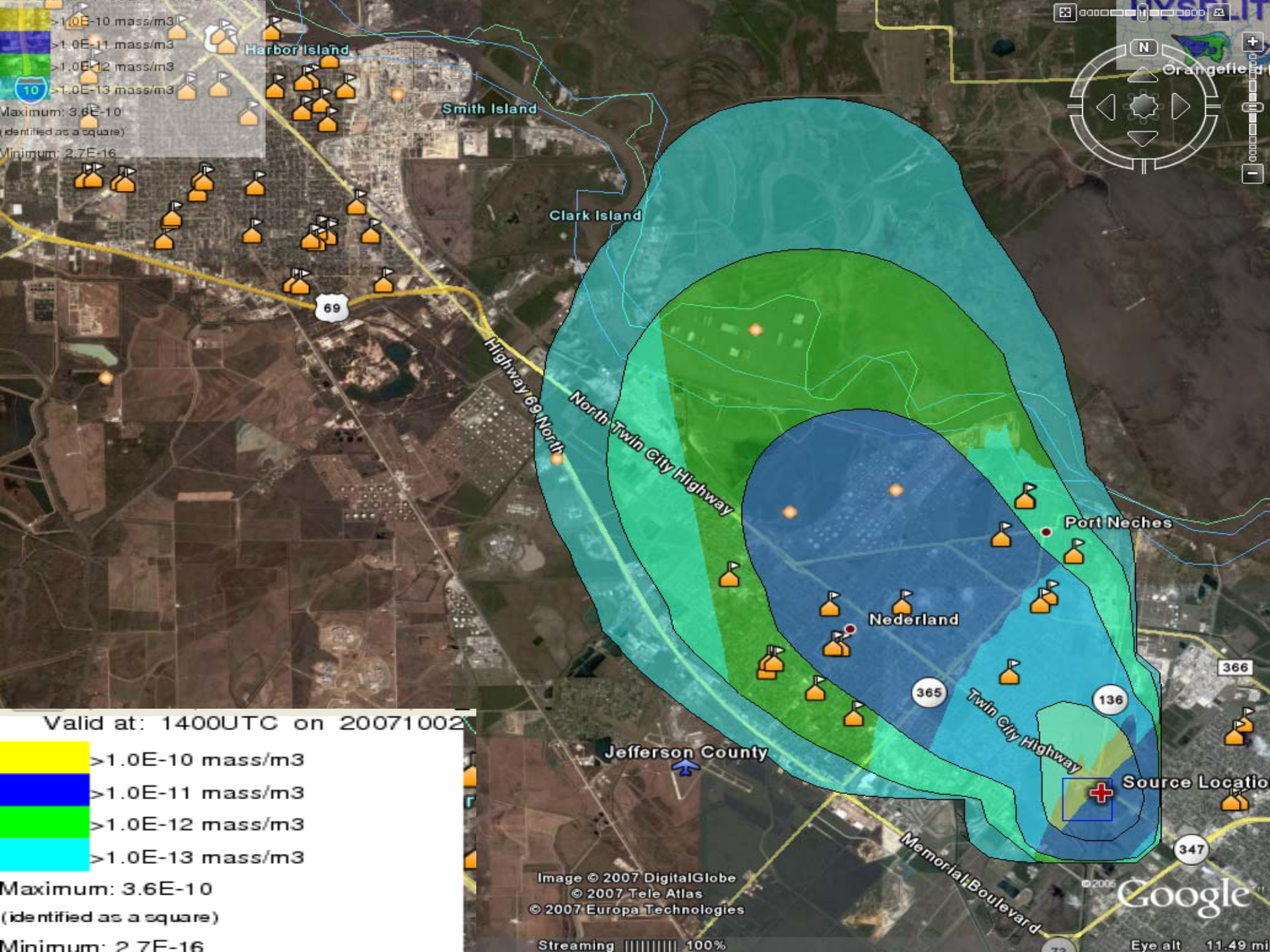
HYSPLIT



2 – 3
minutes

- Tomorrow
 - IC calls WFO
 - WFO initiates run
 - WFO retrieves run and passes to IC
 - Total time – 2-3 minutes
 - Output
 - Google Earth
 - Shape files
- Future enhancements
 - Incorporate CAMEO/ALOHA source term data base
 - Plume over time





>1.0E-10 mass/m³
>1.0E-11 mass/m³
>1.0E-12 mass/m³
>1.0E-13 mass/m³
Maximum: 3.6E-10
(identified as a square)
Minimum: 2.7E-16

Valid at: 1400UTC on 20071002

>1.0E-10 mass/m³
>1.0E-11 mass/m³
>1.0E-12 mass/m³
>1.0E-13 mass/m³
Maximum: 3.6E-10
(identified as a square)
Minimum: 2.7E-16

Image © 2007 DigitalGlobe
© 2007 Tele Atlas
© 2007 Europa Technologies

Streaming 100%

©2006 Google

Eye alt 11.49 m