

Christmas Day Climatology

Richmond, VA:

Avg. High/Low: 48 F / 29 F
 Highest Max: 74 F / 1955
 Record Low Max: 14 F / 1983
 Record High Min: 58 F / 1932
 Lowest Min: 3 F / 1983

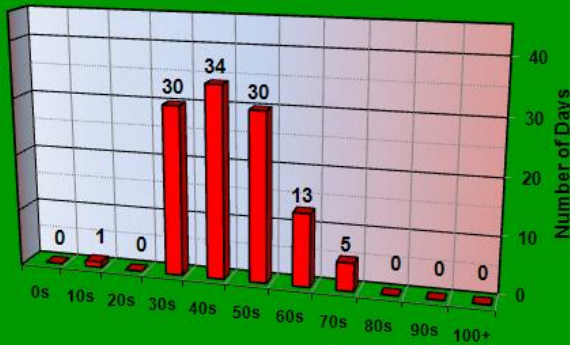
Norfolk, VA:

Avg. High/Low: 50 F / 34 F
 Highest Max: 75 F / 1964
 Record Low Max: 16 F / 1983
 Record High Min: 59 F / 1932
 Lowest Min: 7 F / 1983

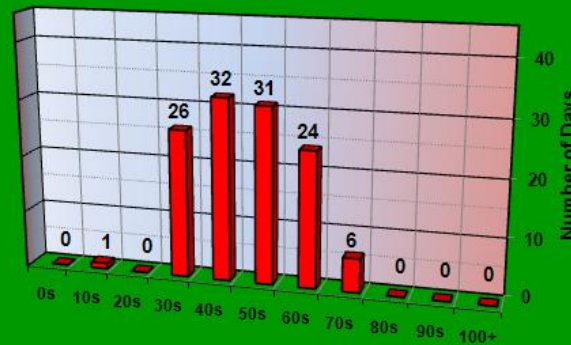
Temperature:

Temperatures on Christmas Day show a fairly wide distribution across central and southeast Virginia; highs have varied from the balmy 70s to the frigid teens, although 30s, 40s and 50s are most commonly observed. High temperatures that fail to rise above freezing are relatively rare, having occurred on just 7 dates in over 100 years of data at both Richmond and Norfolk. Daily minimum temperatures are not quite as varied, generally in the 20s and 30s, although they are occasionally as warm as the 50s or on a few rare occasions in the single digits.

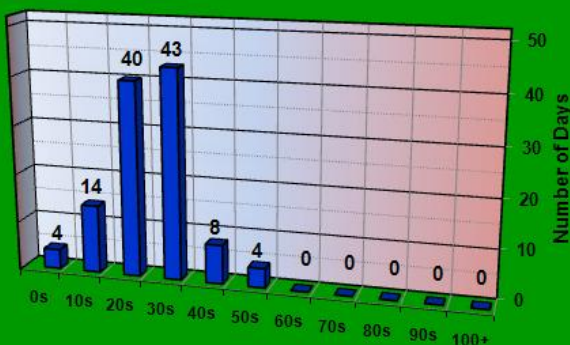
Christmas Day High Temperature by Category
 Richmond, VA (1897-Present)



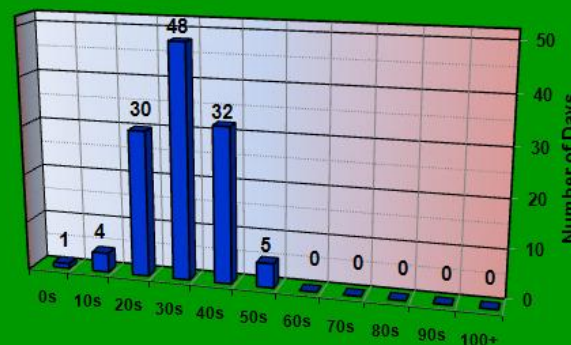
Christmas Day High Temperature by Category
 Norfolk, VA (1890-Present)



Christmas Day Min Temperature by Category
 Richmond, VA (1897-Present)



Christmas Day Min Temperature by Category
 Norfolk, VA (1890-Present)



Richmond, VA (1897-Present):

Greatest Snowfall: **5.4"/ 1914**
 Greatest Snow Depth: **7"/ 1908**
 (7am)

Norfolk, VA (1890-Present):

Greatest Snowfall: **2.4"/ 1947**
 Greatest Snow Depth: **5"/ 1914**
 (7am)

Snowfall & Snow Depth:

There are several definitions of a “white Christmas”. For the purposes of comparison, the graphs at the left depict both snowfall and snow depth on Christmas Day. In general, snowfall and/or snow on the ground are relatively rare occurrences at both Richmond and Norfolk. Measureable snowfall occurs about 4% of the time at Norfolk and 7% of the time at Richmond. Snow depth data (taken at 7am) shows similar probabilities, about 4% at Norfolk and 7% at Richmond.

