

Percent of Flood Crest Occurrences by One Foot Intervals

Lat = 42 00 08

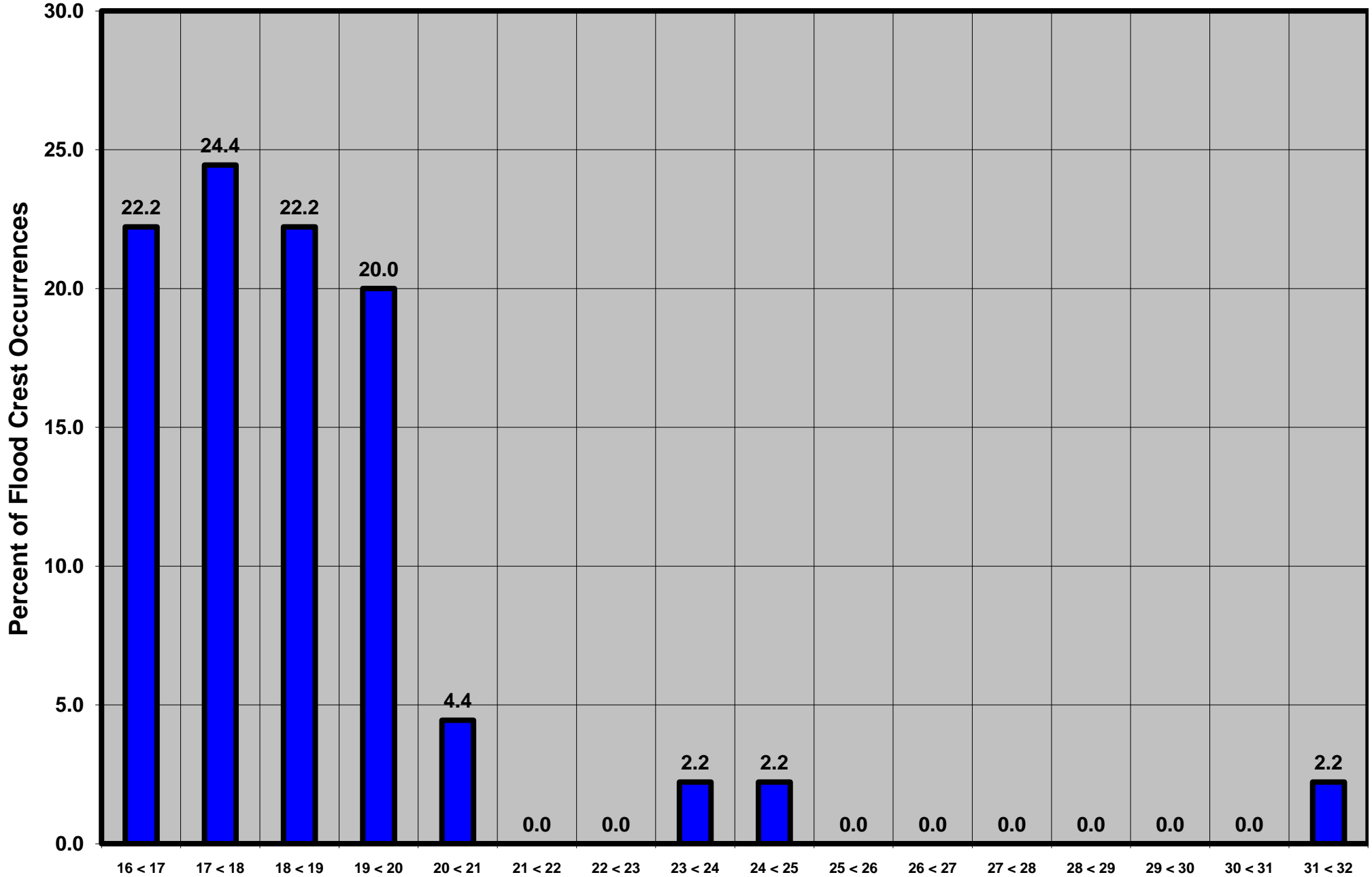
Chemung River at Chemung, NY

Lon = 76 38 06

Flood Stage = 16 ft

Period of Record 1930 to Present

Floods = 45



Drainage Area = 2,506 sq mi

Gage Datum = 778.63 ft MSL

Height Above Flood Stage (ft)

See Forecast Point Floods for more Information.

Chemung Basin

Chemung County