

# Percent of Flood Crest Occurrences by One Foot Intervals

Lat = 41 57 09

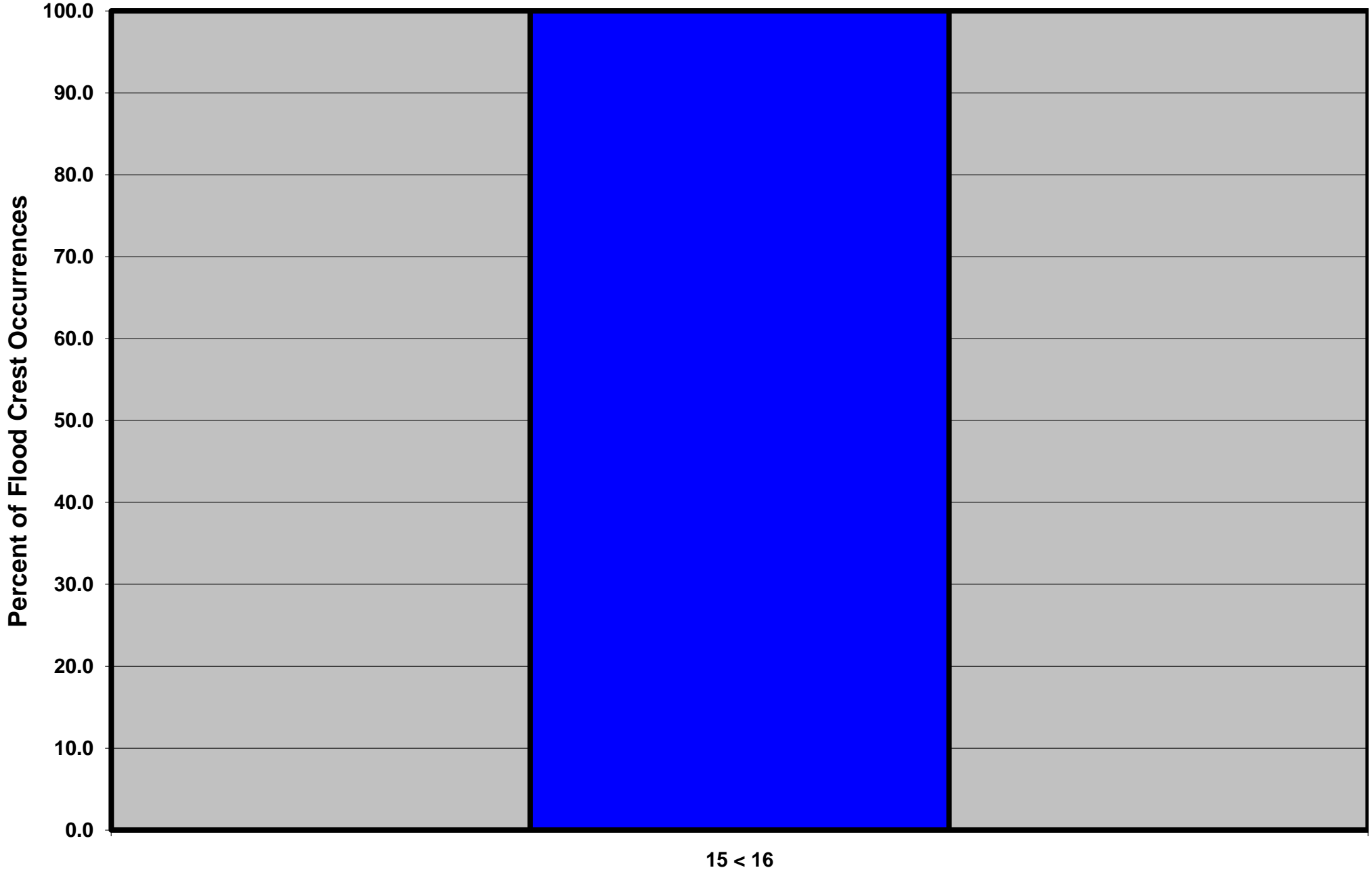
Tioga River at Tioga Junction, PA

Lon = 77 06 56

Flood Stage = 15 ft

Period of Record 1978 to Present

Floods = 2



Drainage Area = 446 sq mi  
Gage Datum = 990.43 ft MSL

Height Above Flood Stage (ft)  
See Forecast Point Floods for more Information.

Chemung Basin  
Tioga County