

Percent of Flood Crest Occurrences by One Foot Intervals

Lat = 40 29 05

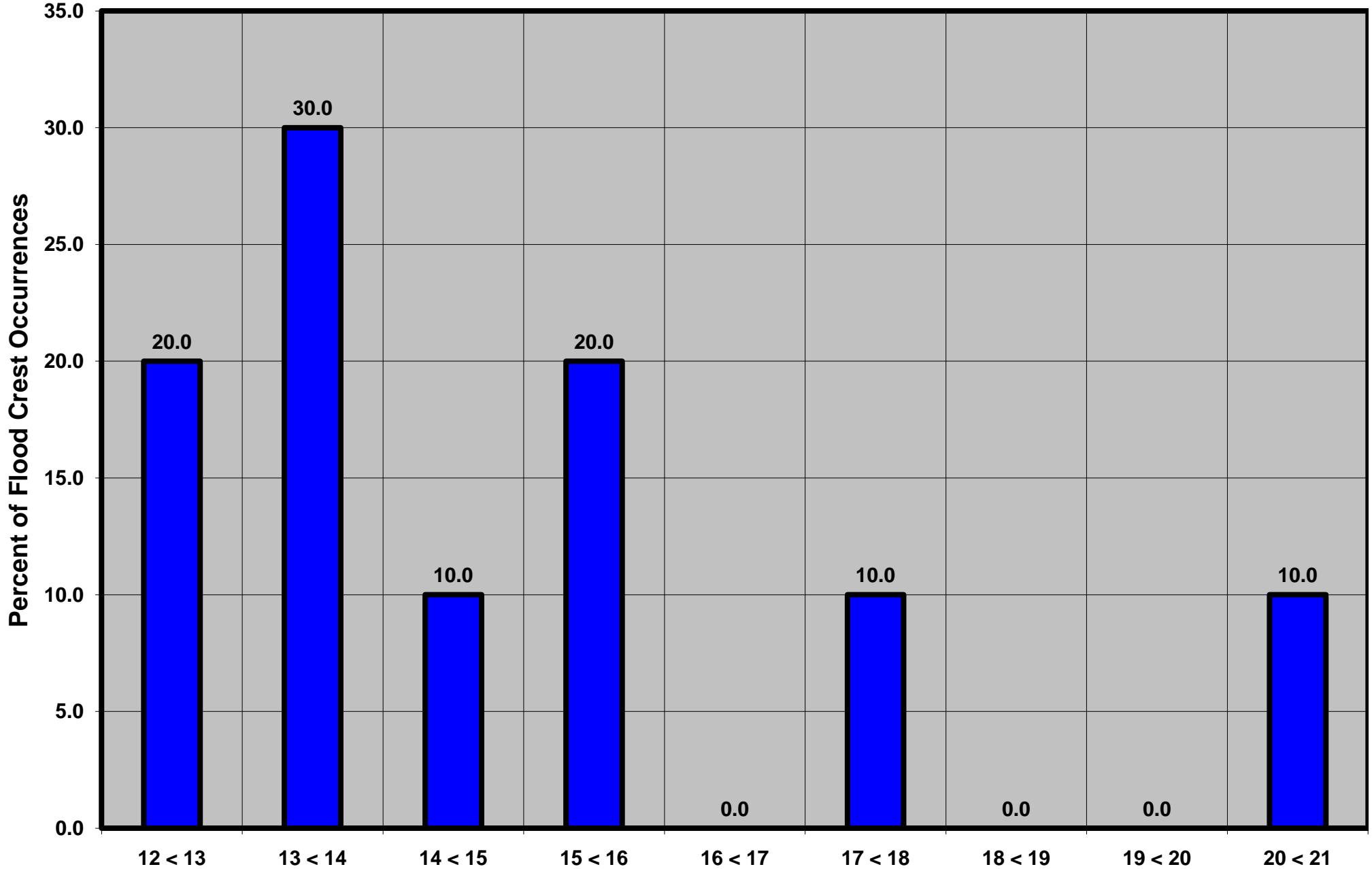
Juniata River at Huntingdon, PA

Lon = 78 01 09

Flood Stage = 12 ft

Period of Record 1941 to Present

Floods = 10



Drainage Area = 816 sq mi
Gage Datum = 599.69 ft MSL

Height Above Flood Stage (ft)
See Forecast Point Floods for more Information.

Juniata Basin
Huntingdon County