

Cumulative Flood Crest Percentages by One Foot Intervals

Lat = 40 35 40

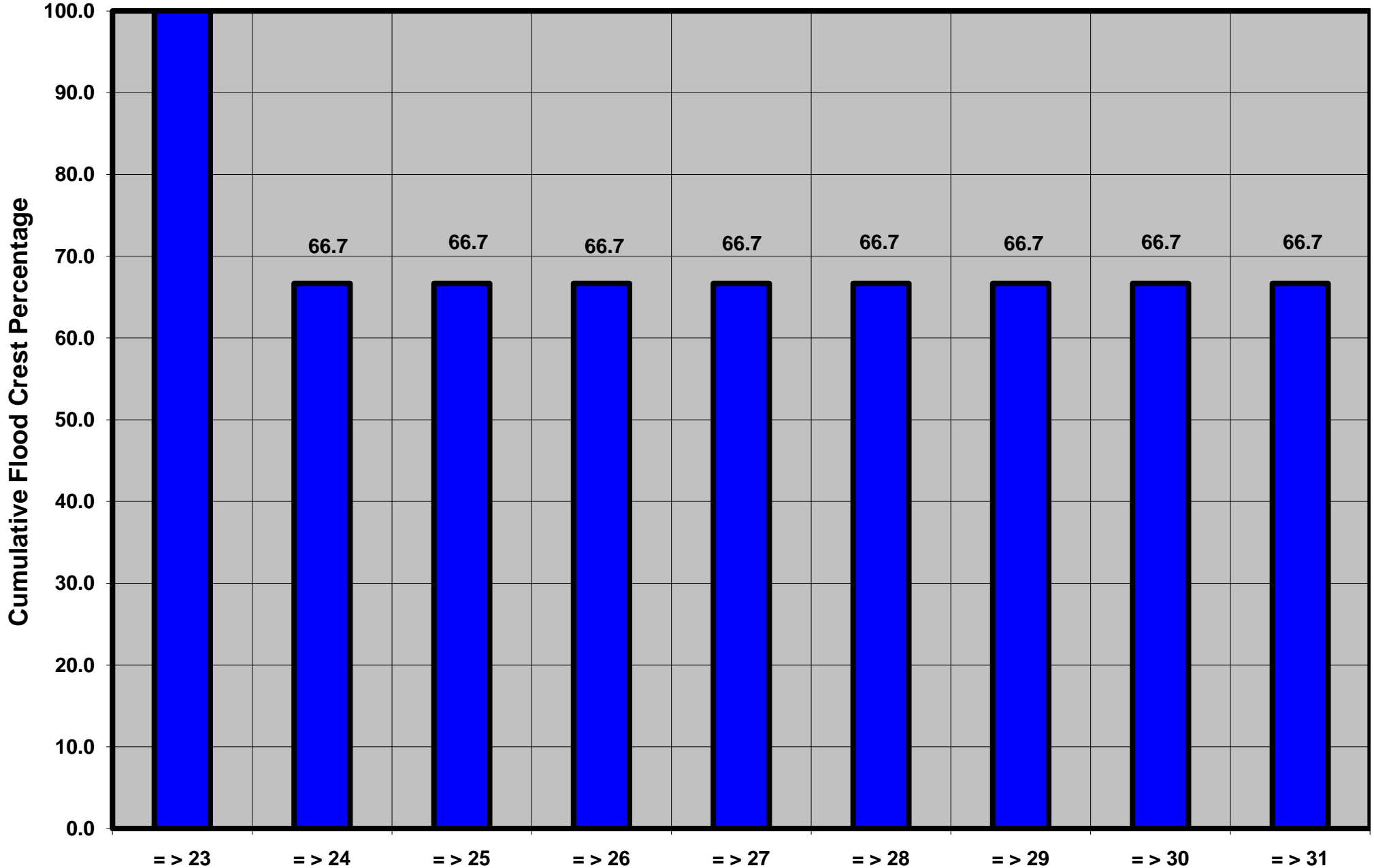
Juniata River at Lewistown, PA

Lon = 77 34 58

Flood Stage = 23 ft

Period of Record 1988 to Present

Floods = 3



Drainage Area = 2,519 sq mi

Gage Datum = 443.83 ft MSL

Height Above Flood Stage (ft)

See Forecast Point Floods for more Information.

Juniata Basin

Mifflin County