

# Cumulative Flood Crest Percentages by One Foot Intervals

Lat = 40 28 42

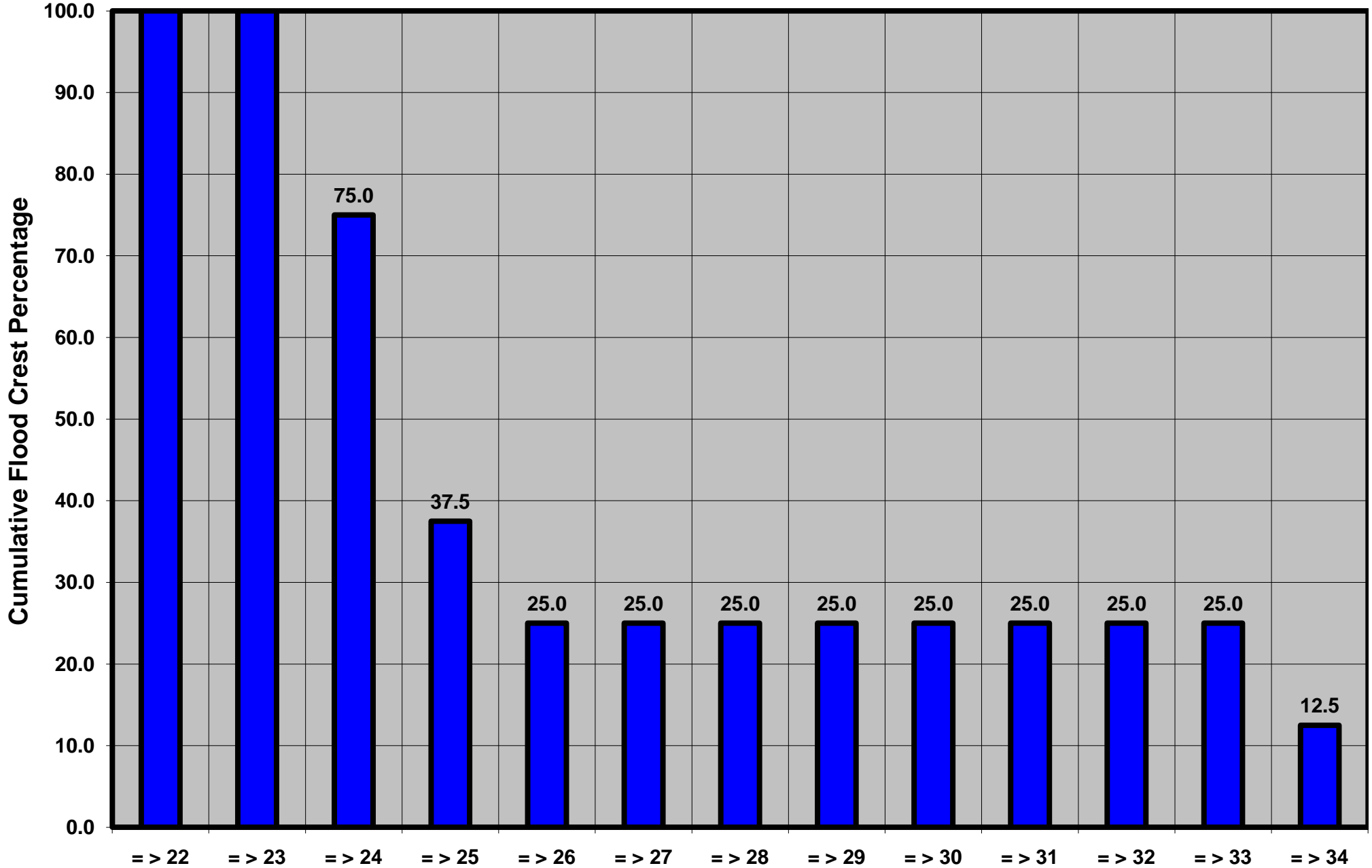
Juniata River at Newport, PA

Lon = 77 07 46

Flood Stage = 22 ft

Period of Record 1929 to Present

Floods = 8



Drainage Area = 3,354 sq mi  
Gage Datum = 363.93 ft MSL

Height Above Flood Stage (ft)  
See Forecast Point Floods for more Information.

Juniata Basin  
Perry County