

# Cumulative Flood Crest Percentages by One Foot Intervals

Lat = 40 12 57

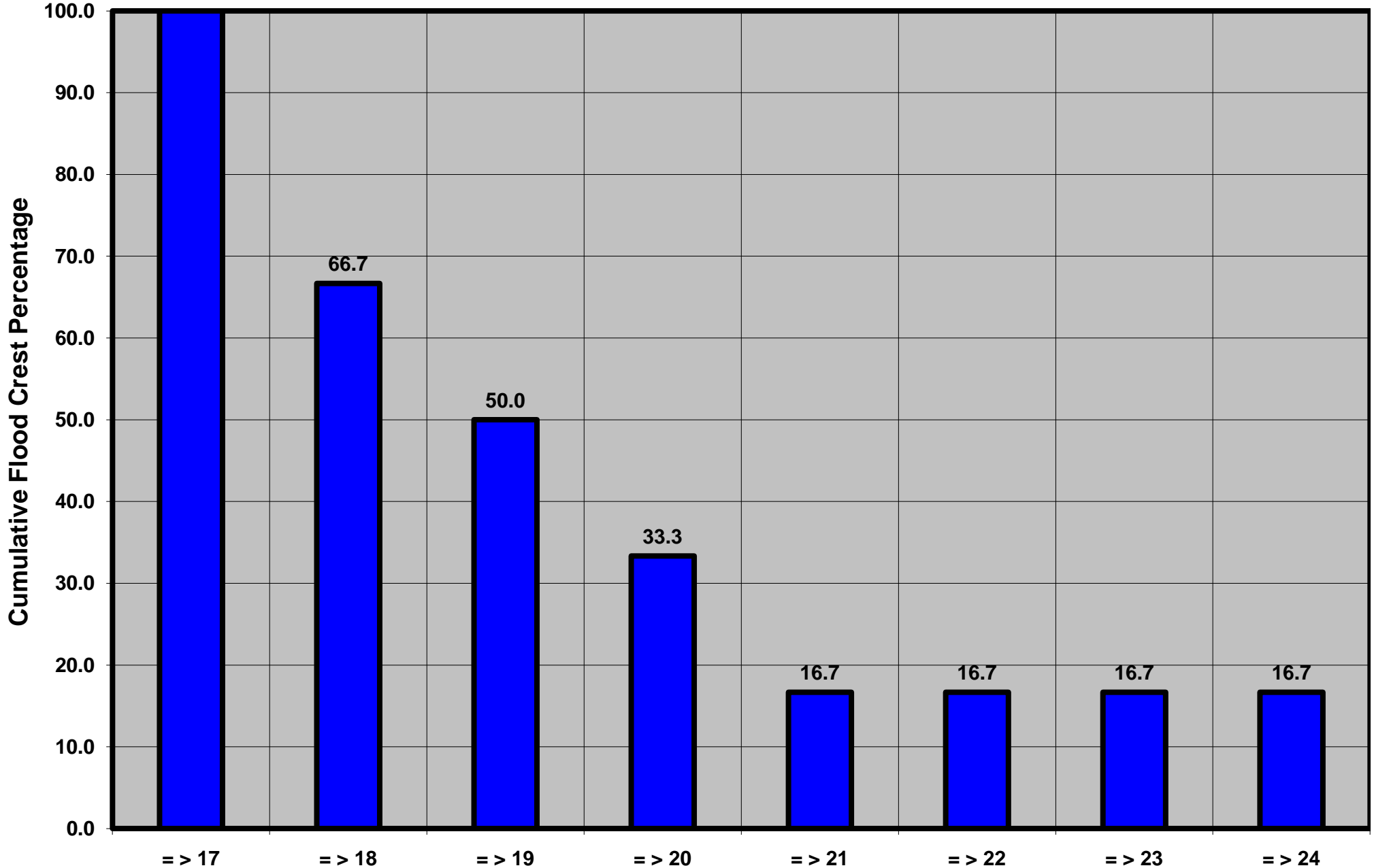
Juniata River at Saxton, PA

Lon = 78 15 56

Flood Stage = 17 ft

Period of Record 1931 to Present

Floods = 6



Drainage Area = 756 sq mi  
Gage Datum = 795.77 ft MSL

See Forecast Point Floods for more Information.

Juniata Basin  
Bedford County