

# Percent of Flood Crest Occurrences by One Foot Intervals

Lat = 40 36 45

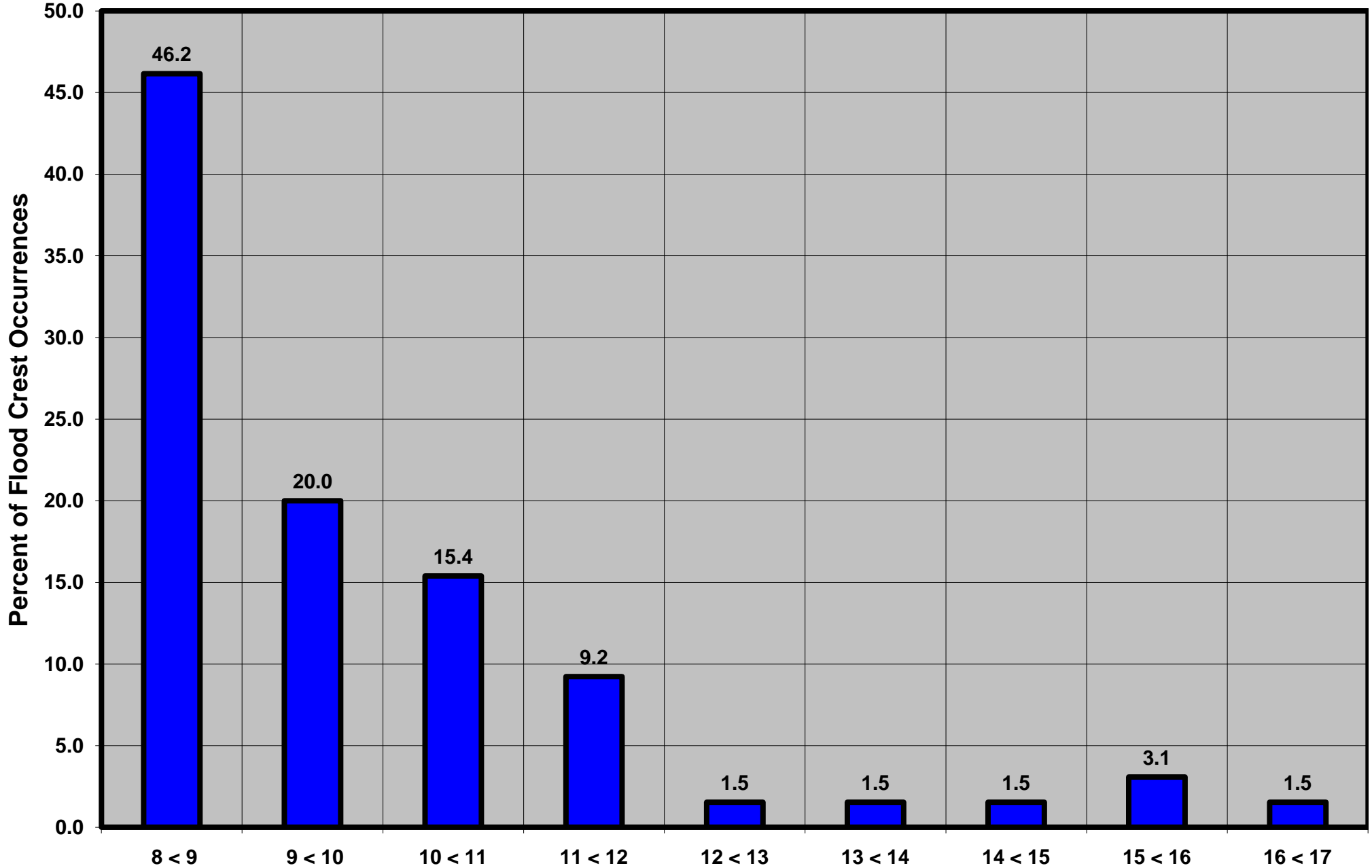
Little Juniata River at Spruce Creek, PA

Lon = 78 08 27

Flood Stage = 8 ft

Period of Record 1938 to Present

Floods = 65



Drainage Area = 220 sq mi  
Gage Datum = 751.15 ft MSL

See Forecast Point Floods for more Information.

Juniata Basin  
Huntingdon County