

# Cumulative Flood Crest Percentages by One Foot Intervals

Lat = 40 27 47

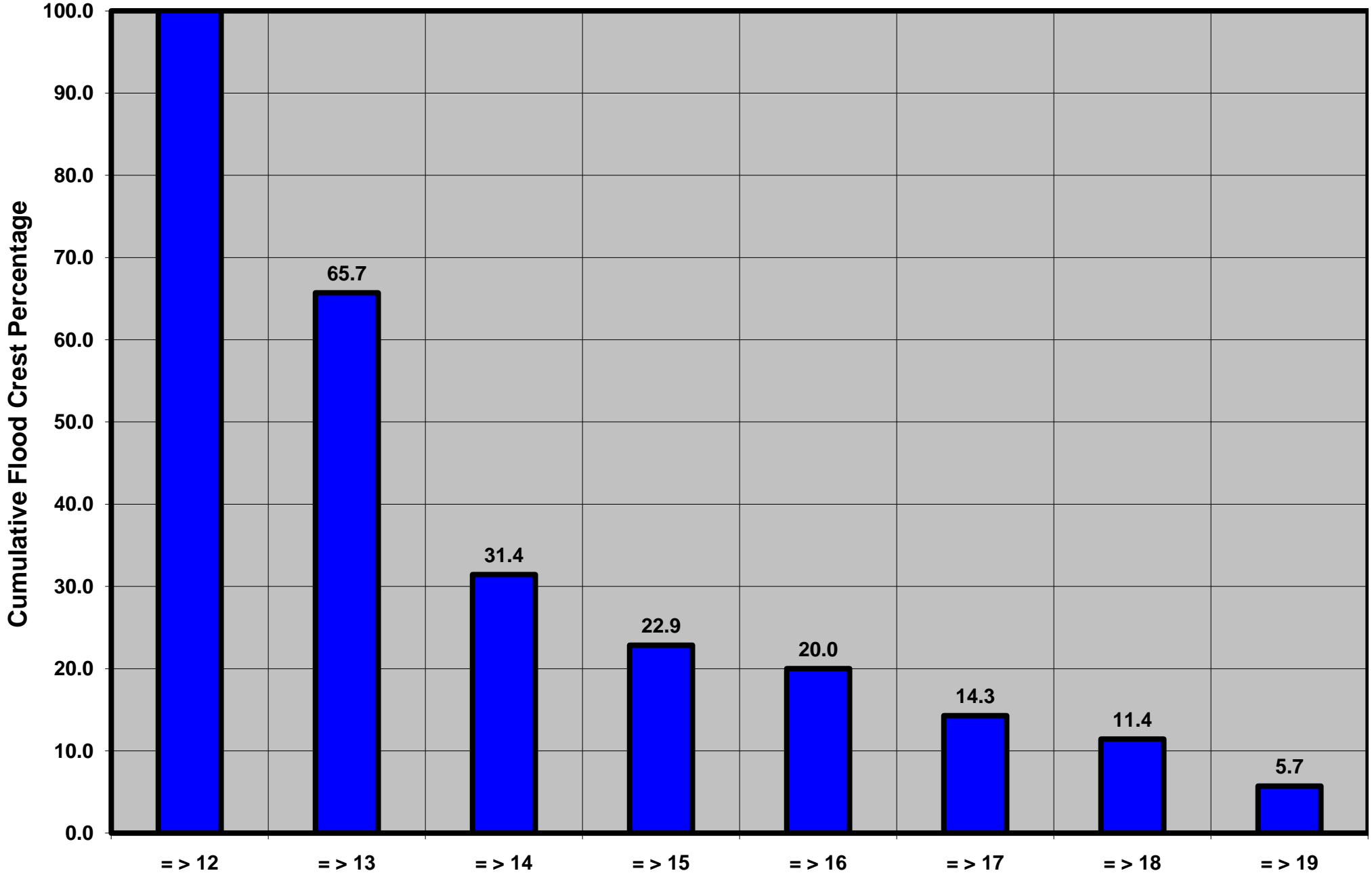
Juniata River at Williamsburg, PA

Lon = 78 12 00

Flood Stage = 12 ft

Period of Record 1928 to Present

Floods = 35



Drainage Area = 291 sq mi

Gage Datum = 831.78 ft MSL

Height Above Flood Stage (ft)

See Forecast Point Floods for more Information.

Juniata Basin

Blair County