

Percent of Flood Crest Occurrences by One Foot Intervals

Lat = 40 27 47

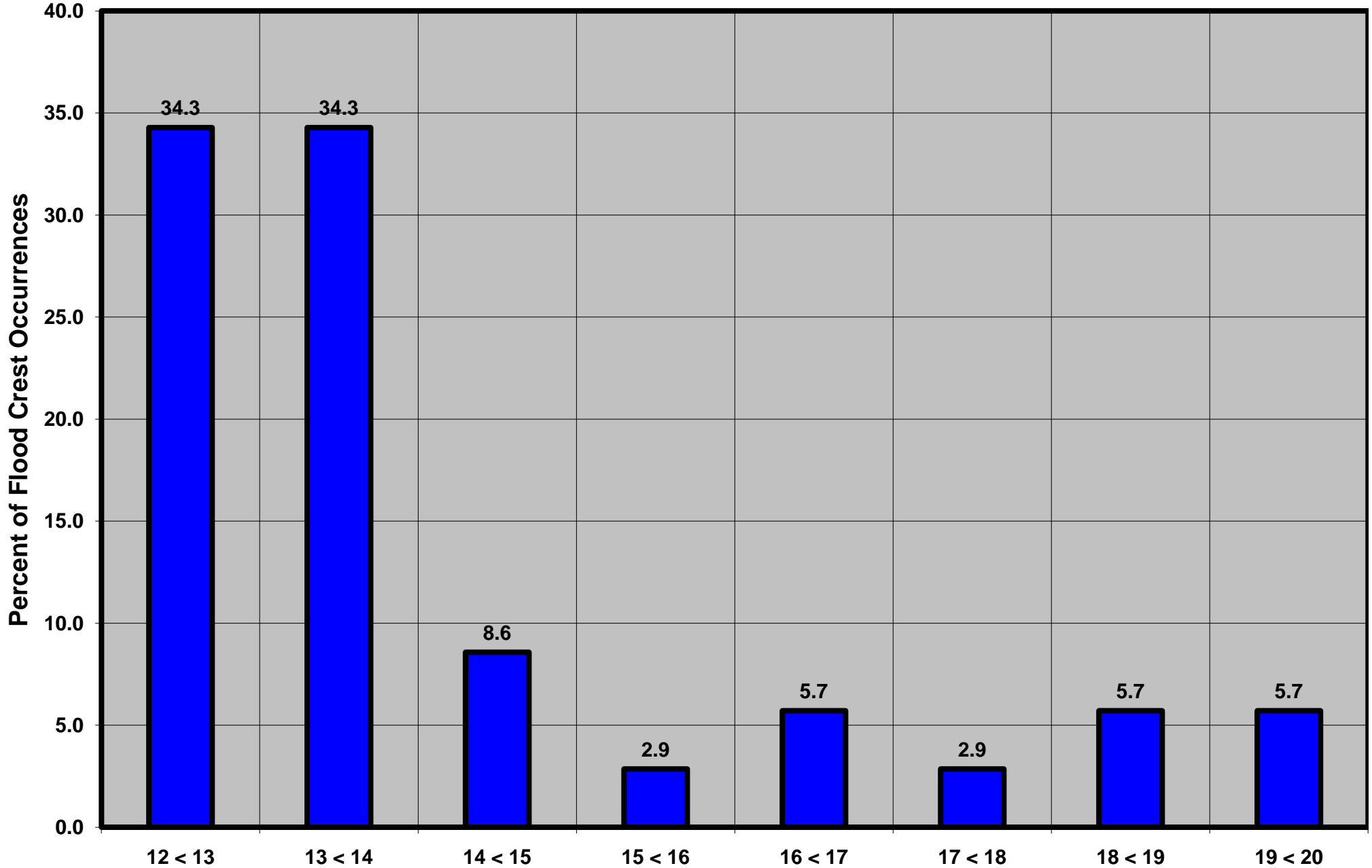
Juniata River at Williamsburg, PA

Lon = 78 12 00

Flood Stage = 12 ft

Period of Record 1928 to Present

Floods = 35



Drainage Area = 291 sq mi
Gage Datum = 831.78 ft MSL

Height Above Flood Stage (ft)
See Forecast Point Floods for more Information.

Juniata Basin
Blair County