

Percent of Flood Crest Occurrences by One Foot Intervals

Lat = 40 45 25

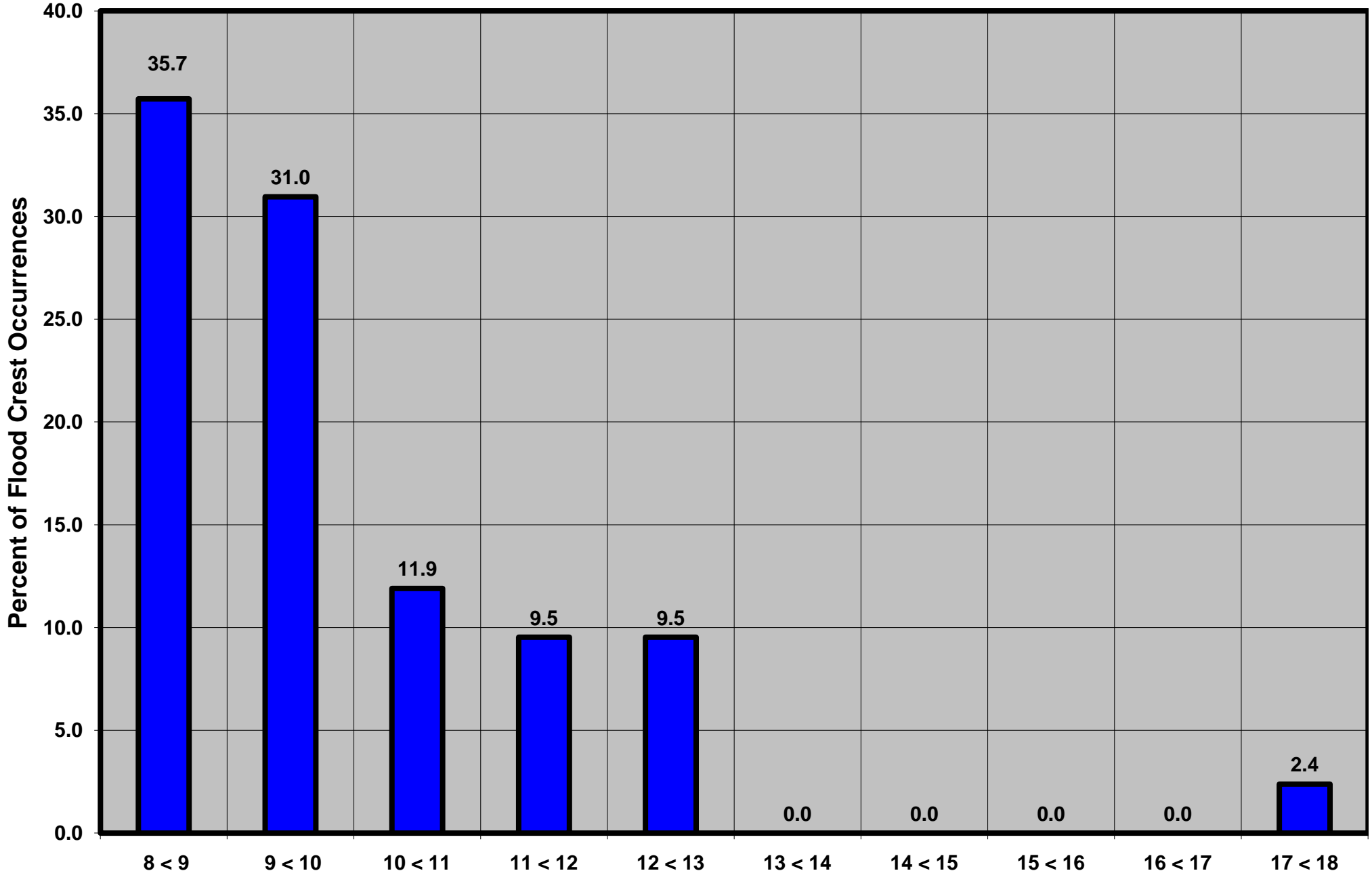
Lehigh River at Walnutport, PA

Lon = 75 36 12

Flood Stage = 8 ft

Period of Record 1946 to Present

Floods = 42



Drainage Area = 889 sq mi
Gage Datum = 350.27 ft MSL

See Forecast Point Floods for more Information.

Lehigh Basin
Northampton County