

# Percent of Flood Crest Occurrences by One Foot Intervals

Lat = 39 39 31

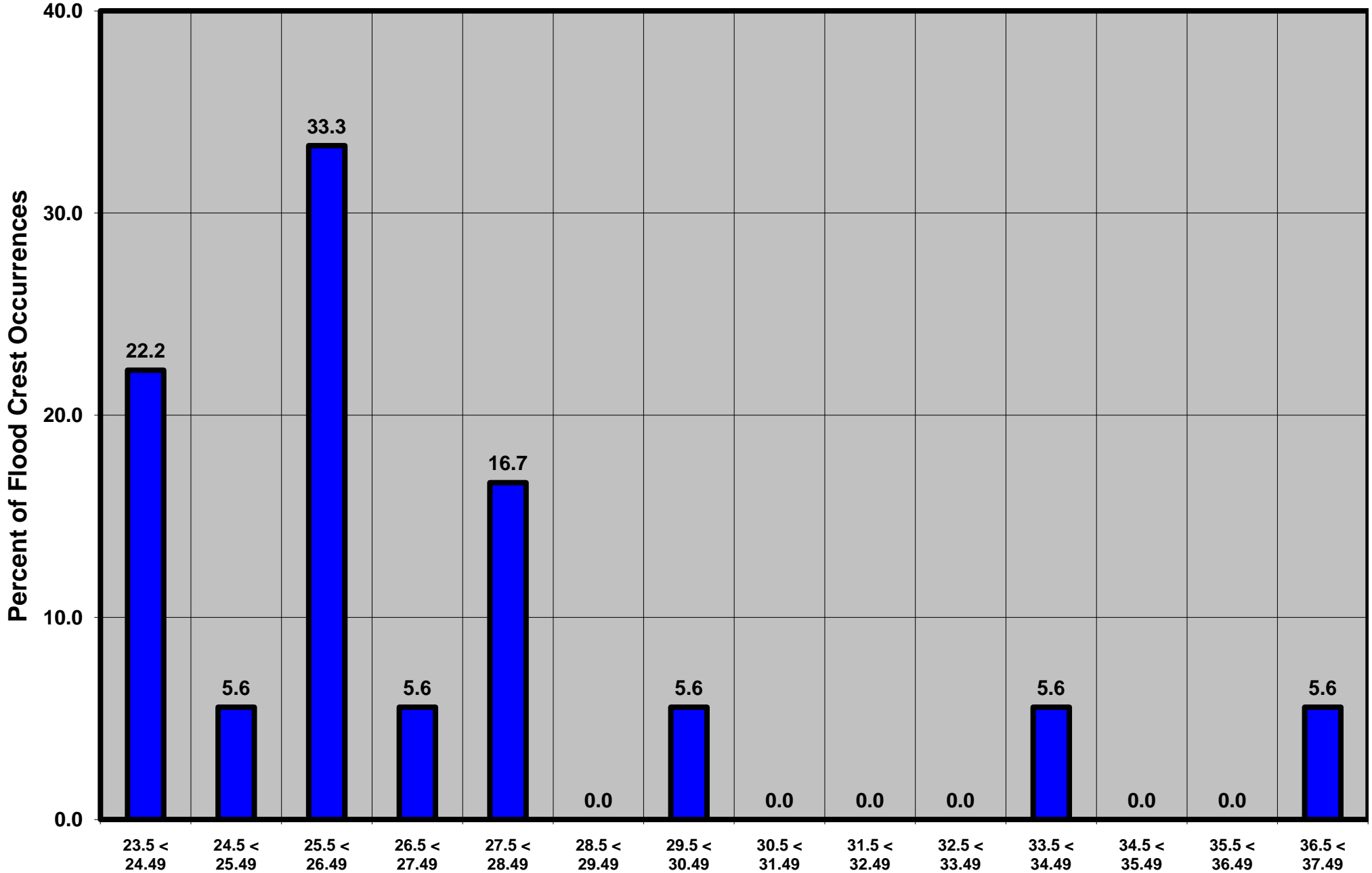
Susquehanna River at Conowingo, MD

Lon = 76 10 28

Flood Stage = 23.5 ft

Period of Record 1967 to Present

Floods = 18



Drainage Area = 27,100 sq mi

Gage Datum = 5.00 ft MSL

Height Above Flood Stage (ft)

See Forecast Point Floods for more Information.

Susquehanna Basin (Lower main stem)

Harford County