

Percent of Flood Crest Occurrences by One Foot Intervals

Lat = 40 24 09

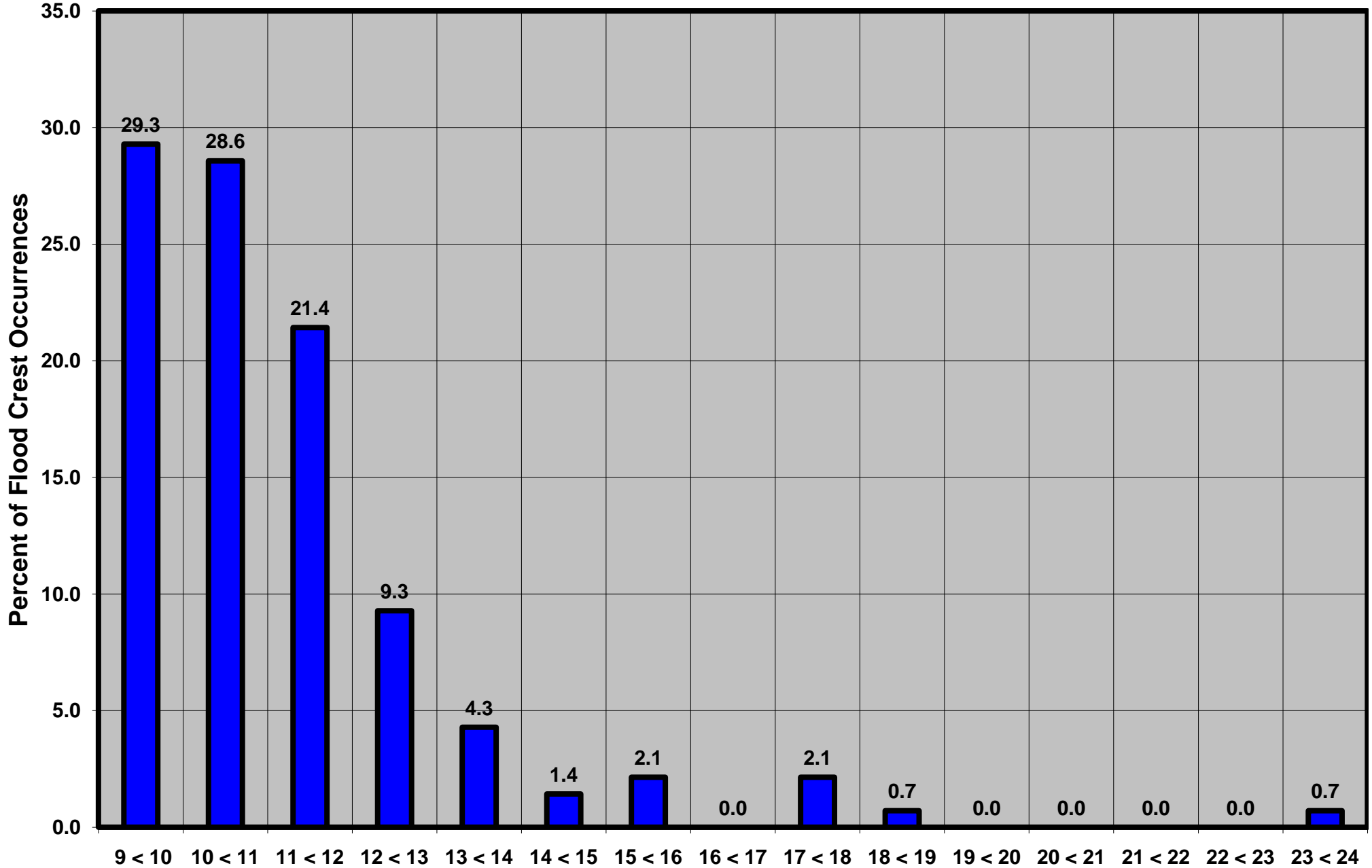
Swatara Creek at Harper Tavern, PA

Lon = 76 34 39

Flood Stage = 9 ft

Period of Record 1919 to Present

Floods = 140



Drainage Area = 337 sq mi
Gage Datum = 356.68 ft MSL

Height Above Flood Stage (ft)
See Forecast Point Floods for more Information.

Swatara Creek Basin
Lebanon County