

Cumulative Flood Crest Percentages by One Foot Intervals

Lat = 40 15 17

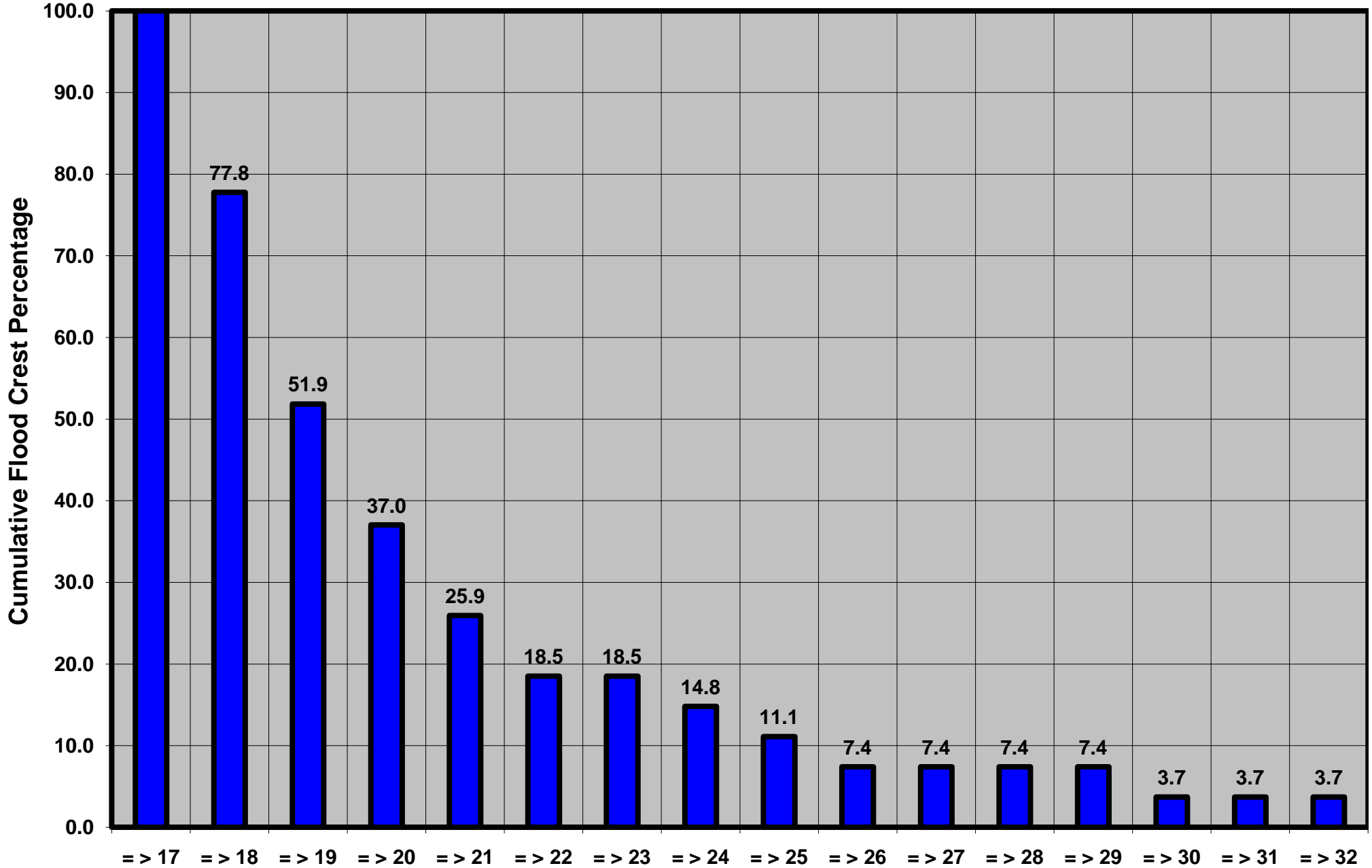
Susquehanna River at Harrisburg, PA

Lon = 76 53 11

Flood Stage = 17 ft

Period of Record 1928 to Present

Floods = 27



Drainage Area = 24,100 sq mi

Height Above Flood Stage (ft)

Swatara Creek Basin

Gage Datum = 290.01 ft MSL

See Forecast Point Floods for more Information.

Lebanon County