

# Percent of Flood Crest Occurrences by One Foot Intervals

Lat = 40 17 54

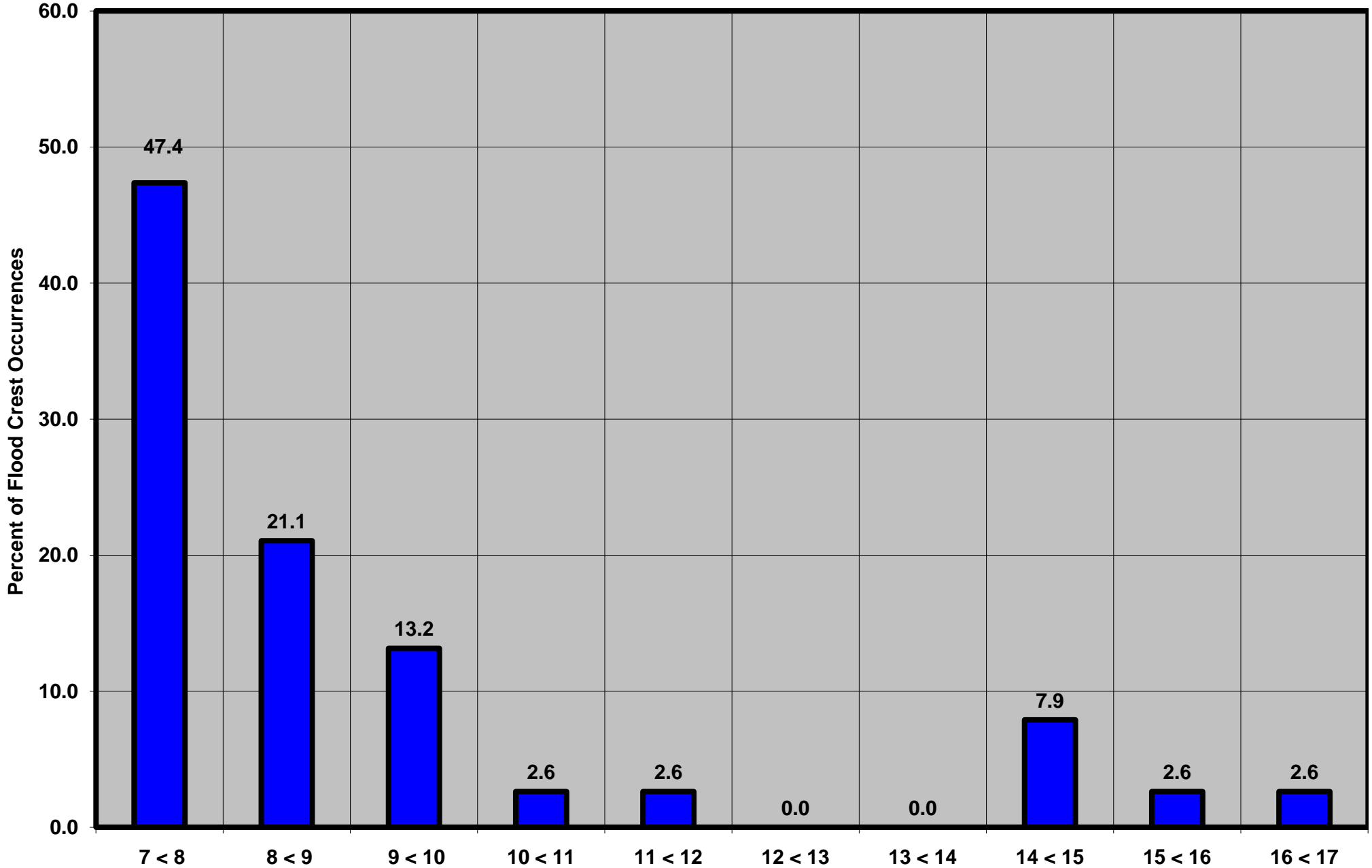
Swatara Creek near Hershey, PA

Lon = 76 40 05

Flood Stage = 7 ft

Period of Record 1975 to Present

Floods = 38



Drainage Area = 483 sq mi  
Gage Datum = 325.94 ft MSL

Height Above Flood Stage (ft)  
See Forecast Point Floods for more Information.

Swatara Creek Basin  
Dauphin County