

Percent of Flood Crest Occurrences by One Foot Intervals

Lat = 40 03 16

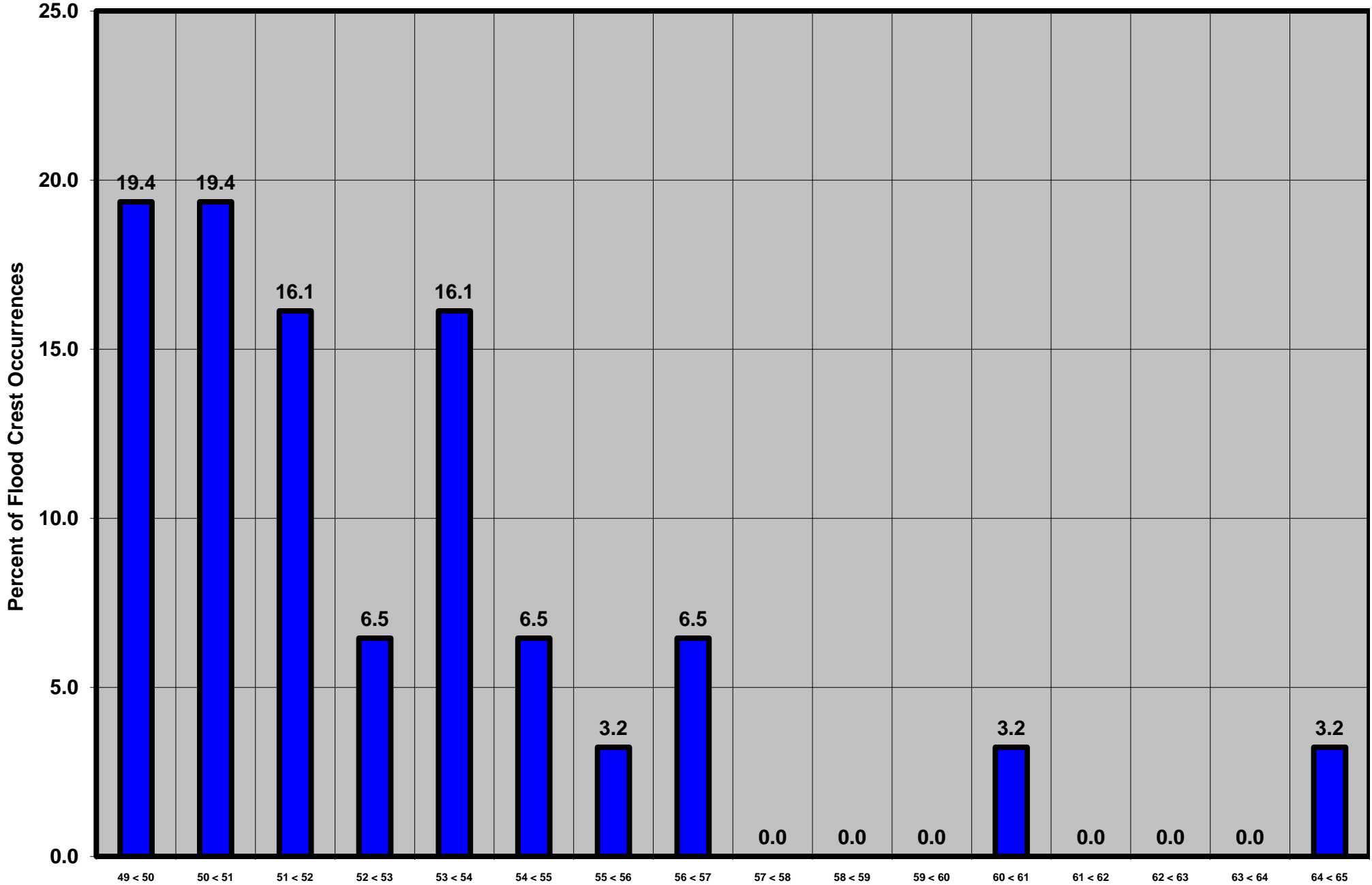
Susquehanna River at Marietta, PA

Lon = 76 31 52

Flood Stage = 49 ft

Period of Record 1931 to Present

Floods = 31



Drainage Area = 25,990 sq mi

Height Above Flood Stage (ft)

Susquehanna Basin (Lower main stem)

Gage Datum = 200.56 ft MSL

See Forecast Point Floods for more Information.

Lancaster County