

Percent of Flood Crest Occurrences by One Foot Intervals

Lat = 40 12 00

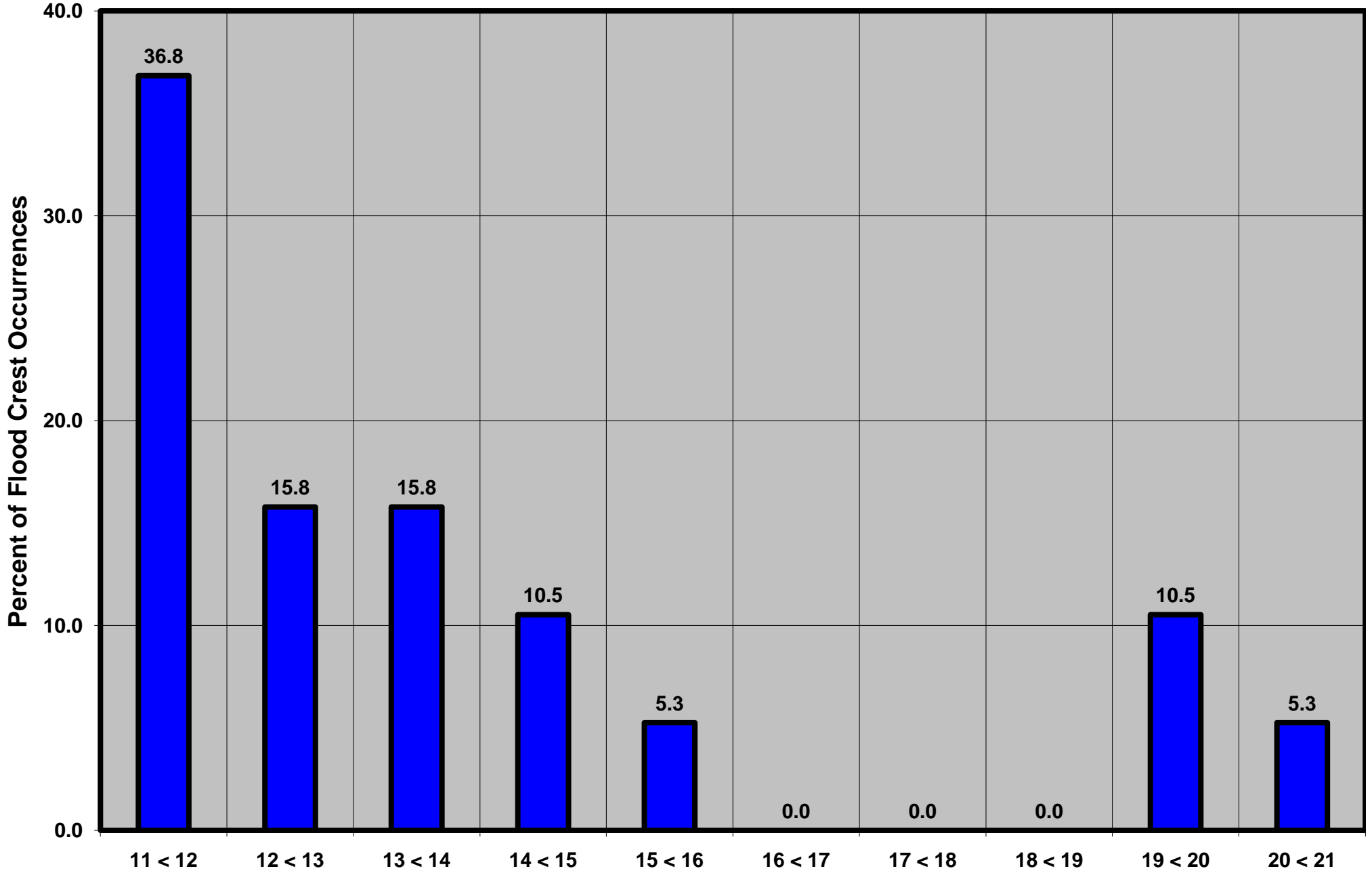
Swatara Creek at Middletown, PA

Lon = 76 43 00

Flood Stage = 11 ft

Period of Record 1975 to Present

Floods = 19



Drainage Area = 569 sq mi

Gage Datum = 284.00 ft MSL

Height Above Flood Stage (ft)

See Forecast Point Floods for more Information.

Swatara Creek Basin

Dauphin County