

Flood Crest Occurrences by One Foot Intervals

Lat = 40 19 24

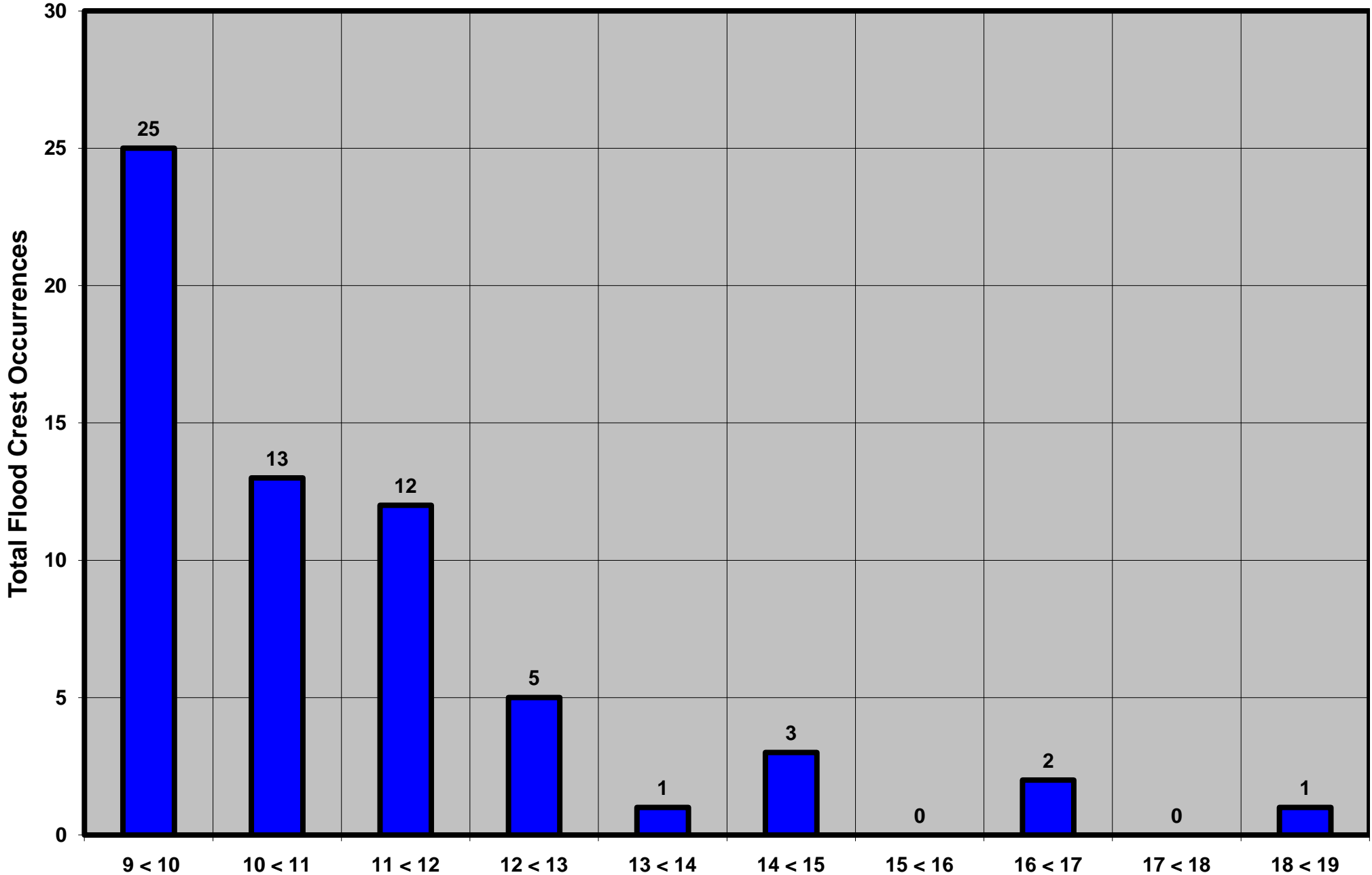
Sherman Creek at Shermans Dale, PA

Lon = 77 10 09

Flood Stage = 9 ft

Period of Record 1930 to Present

Floods = 63



Drainage Area = 207 sq mi
Gage Datum = 422.63 ft MSL

Height Above Flood Stage (ft)

See Forecast Point Floods for more Information.

Sherman Creek Basin
Perry County