

Cumulative Flood Crest Percentages by One Foot Intervals

Lat = 40 59 38

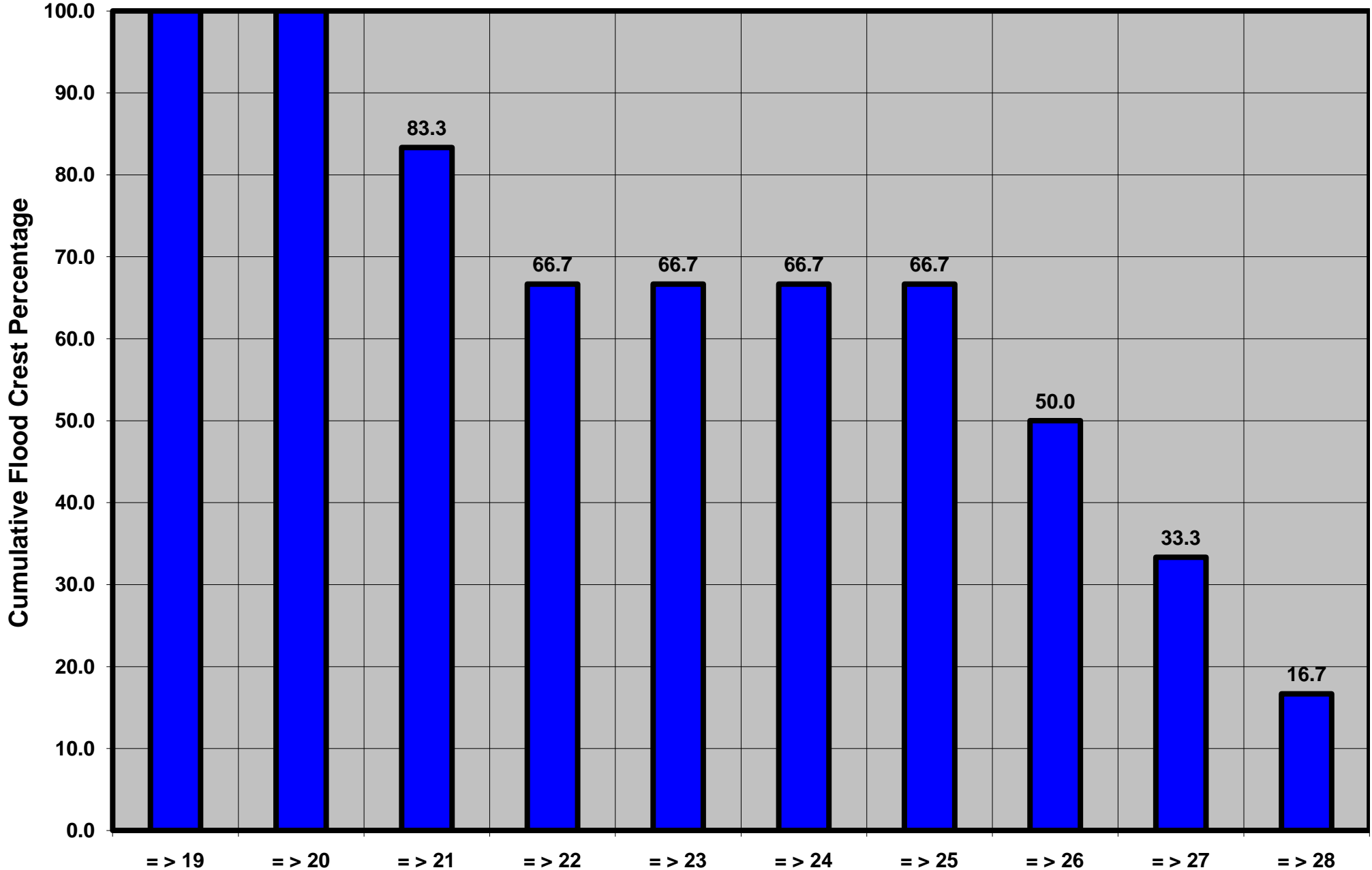
Susquehanna River at Bloomsburg, PA

Lon = 76 26 25

Flood Stage = 19 ft

Period of Record 1995 to Present

Floods = 6



Drainage Area = 10,560 sq mi

Gage Datum = 451.37 ft MSL

Height Above Flood Stage (ft)

See Forecast Point Floods for more Information.

Susquehanna Basin (Main stem)

Cumberland County