

Cumulative Flood Crest Percentages by One Foot Intervals

Lat = 40 57 29

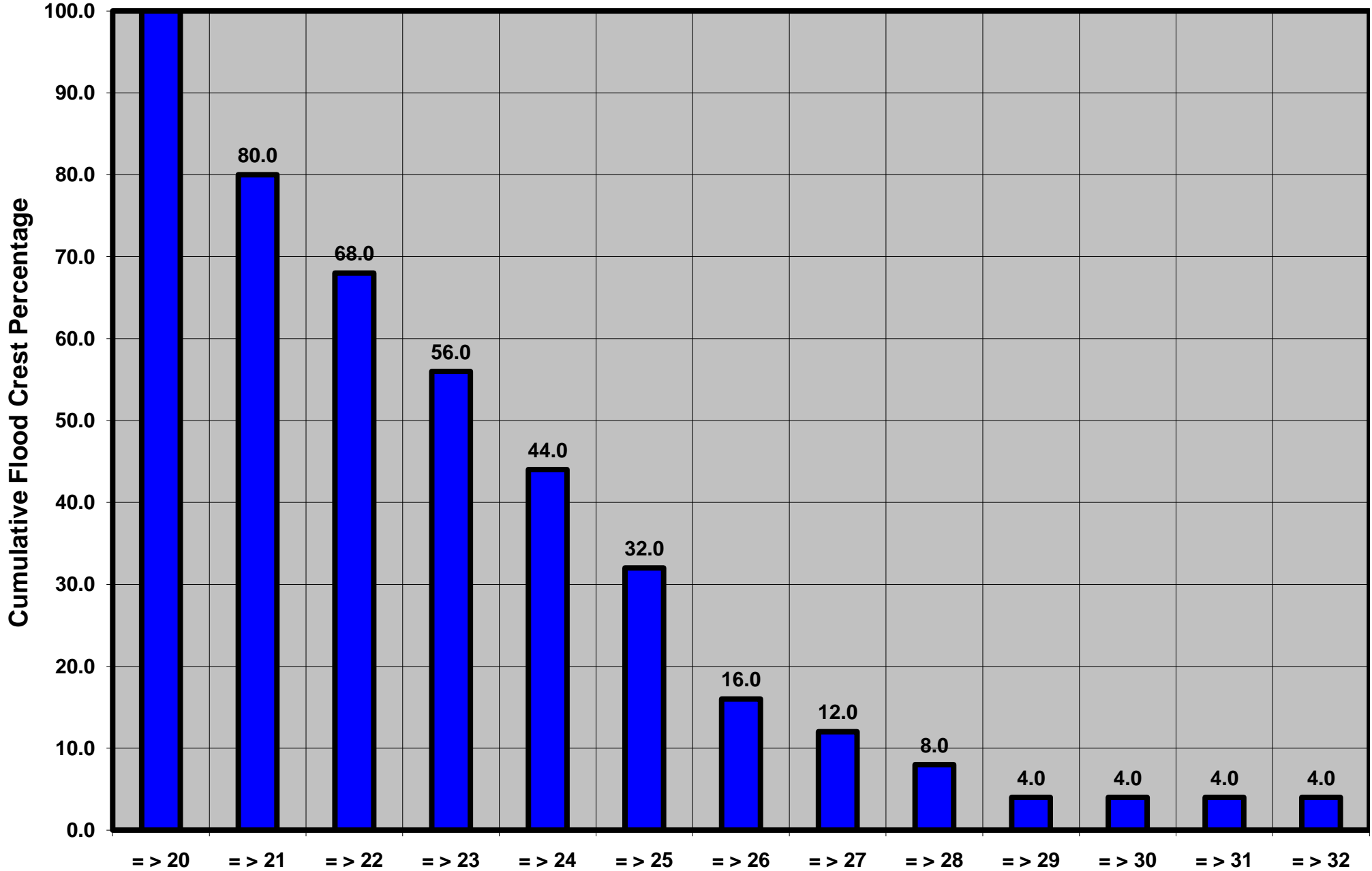
Susquehanna River at Danville, PA

Lon = 76 37 10

Flood Stage = 20 ft

Period of Record 1939 to Present

Floods = 25



Drainage Area = 11,220 sq mi

Gage Datum = 431.29 ft MSL

Height Above Flood Stage (ft)

See Forecast Point Floods for more Information.

Susquehanna Basin (Main stem)

Harford County