

Cumulative Flood Crest Percentages by One Foot Intervals

Lat = 41 36 26

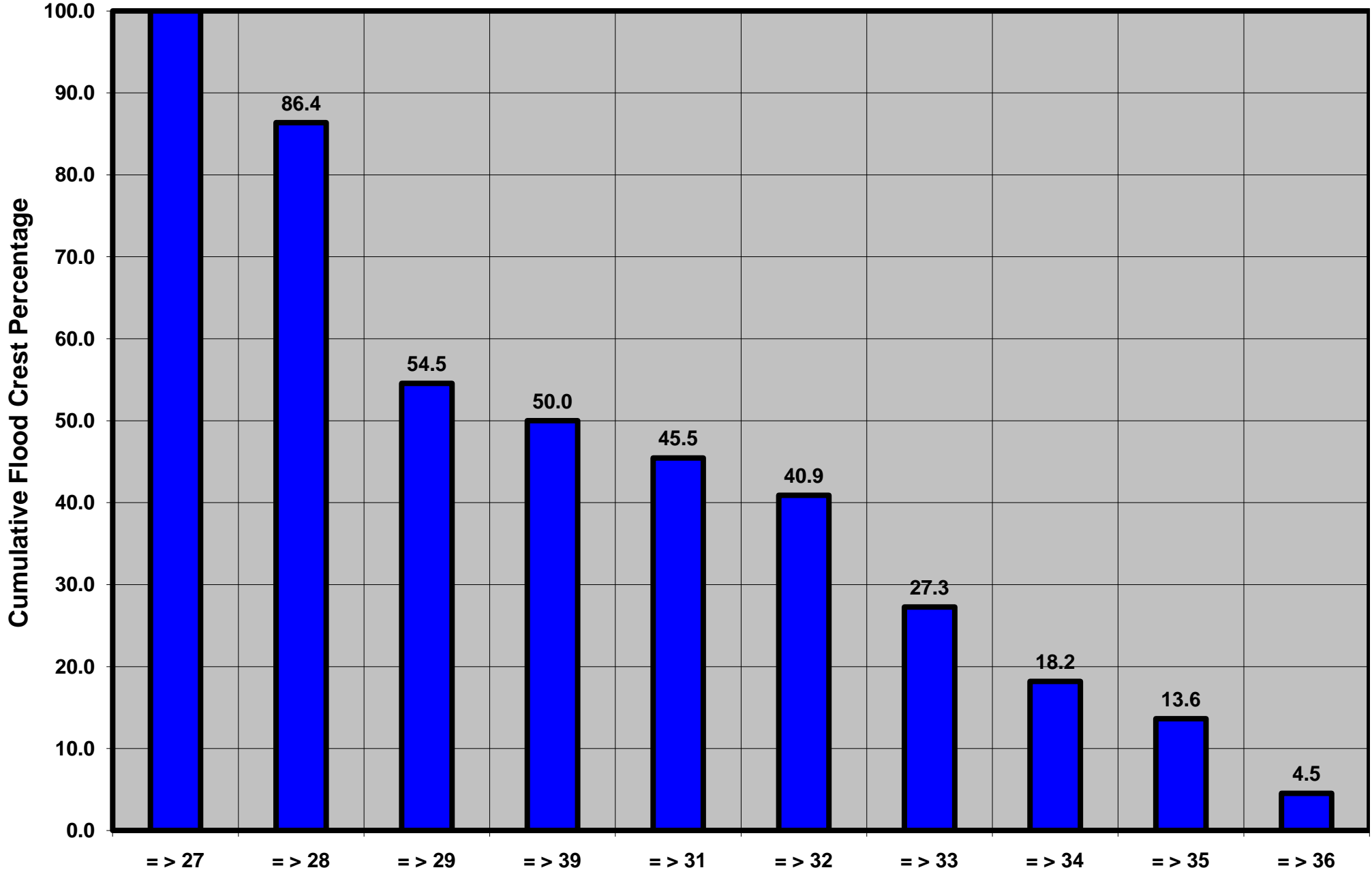
Susquehanna River at Meshoppen, PA

Lon = 76 03 02

Flood Stage = 27 ft

Period of Record 1976 to Present

Floods = 22



Drainage Area = 8,720 sq mi

Gage Datum = 599.76 ft MSL

Height Above Flood Stage (ft)

See Forecast Point Floods for more Information.

Susquehanna Basin (Main stem)

Wyoming County