

# Flood Crest Occurrences by One Foot Intervals

Lat = 41 42 25

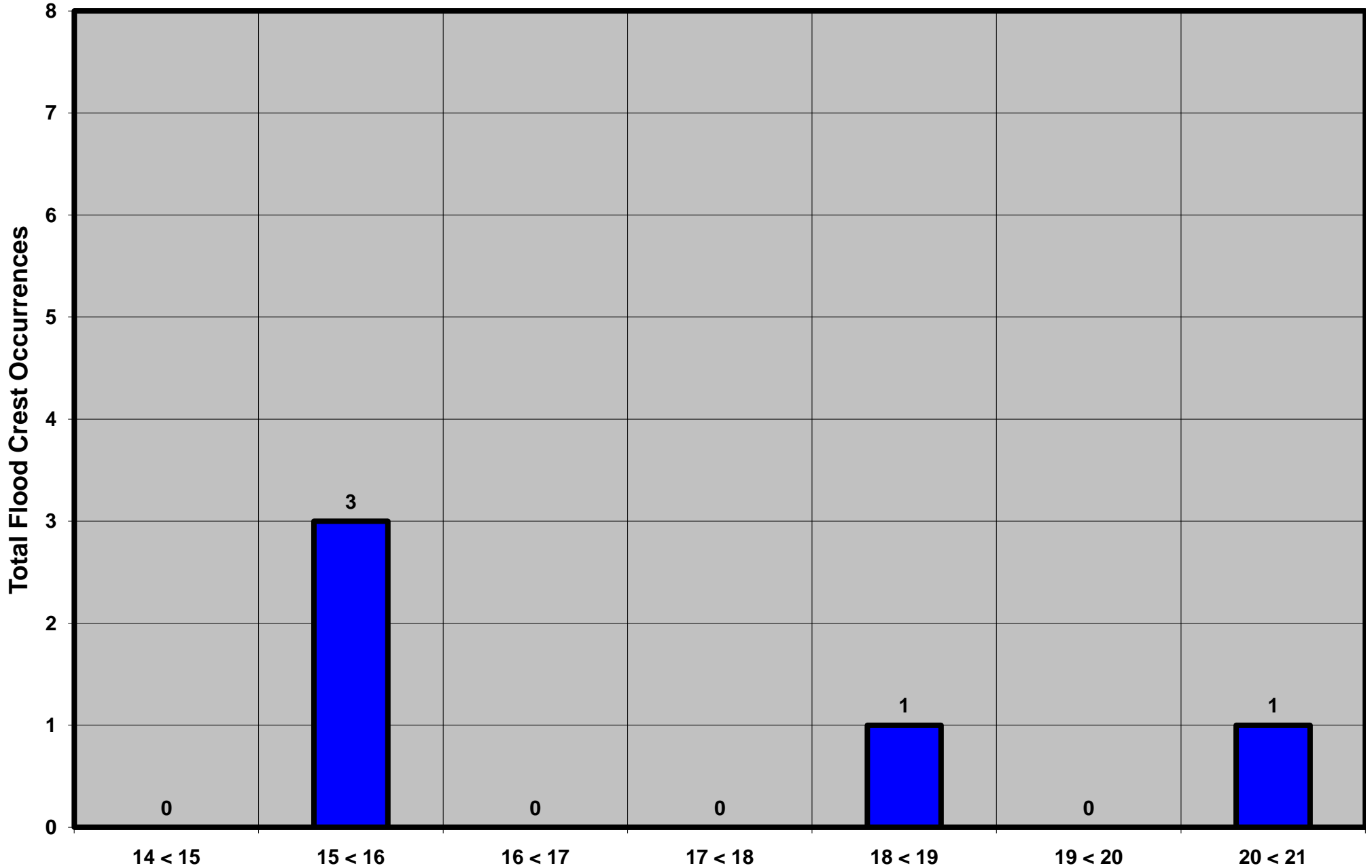
Towanda Creek near Monroeton, PA

Lon = 76 29 06

Flood Stage = 15.5 ft

Period of Record 1976 to Present

Floods = 5



Drainage Area = 215 sq mi  
Gage Datum = 765.53 ft MSL

Height Above Flood Stage (ft)  
See Forecast Point Floods for more Information.

Towanda Creek Basin  
Bradford County