

Cumulative Flood Crest Percentages by One Foot Intervals

Lat = 41 45 55

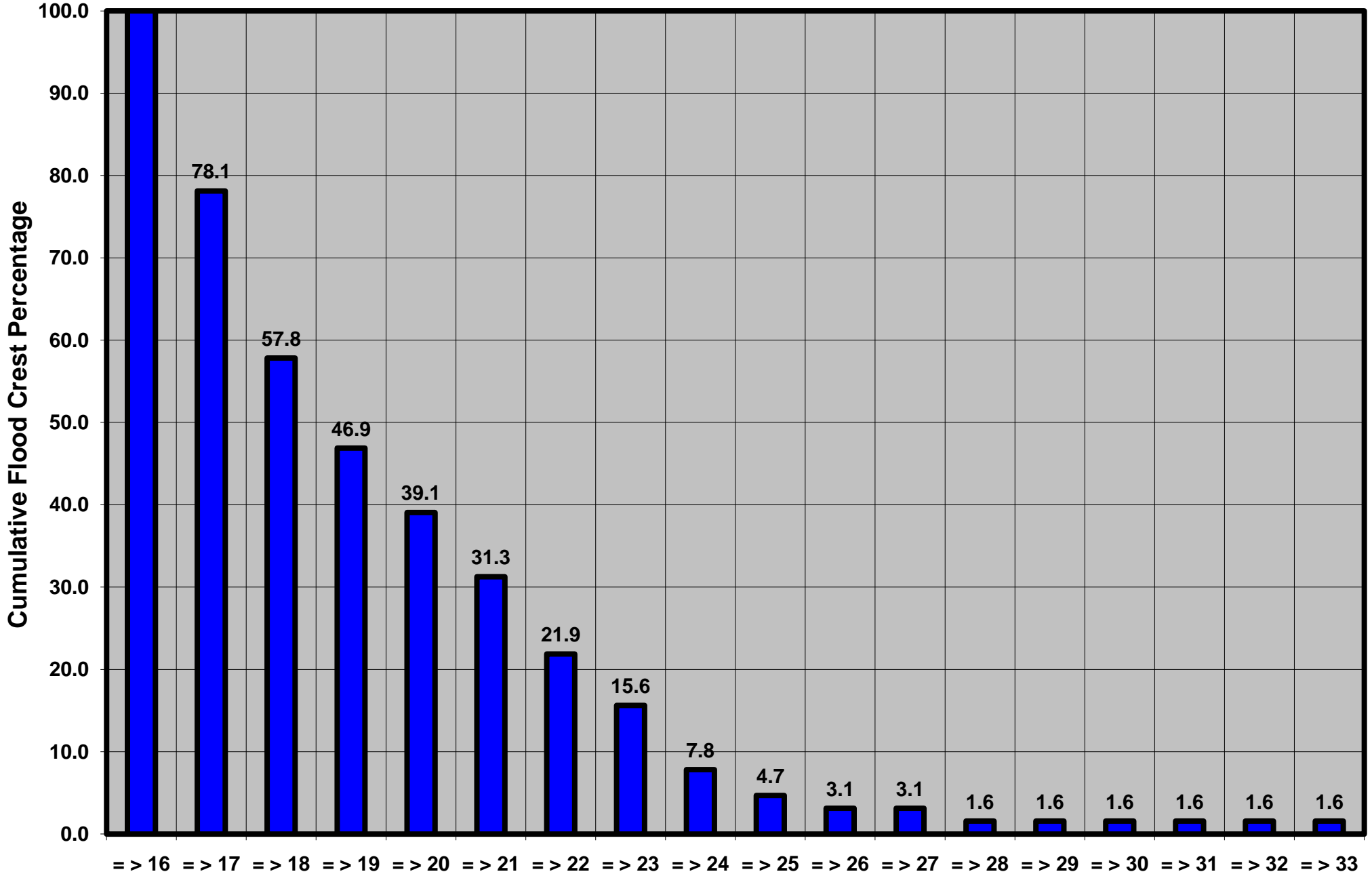
Susquehanna River at Towanda, PA

Lon = 76 26 28

Flood Stage = 16 ft

Period of Record 1938 to Present

Floods = 64



Drainage Area = 7,797 sq mi

Gage Datum = 694.38 ft MSL

Height Above Flood Stage (ft)

See Forecast Point Floods for more Information.

Susquehanna Basin (Main stem)

Bradford County