

Percent of Flood Crest Occurrences by One Foot Intervals

Lat = 41 33 30

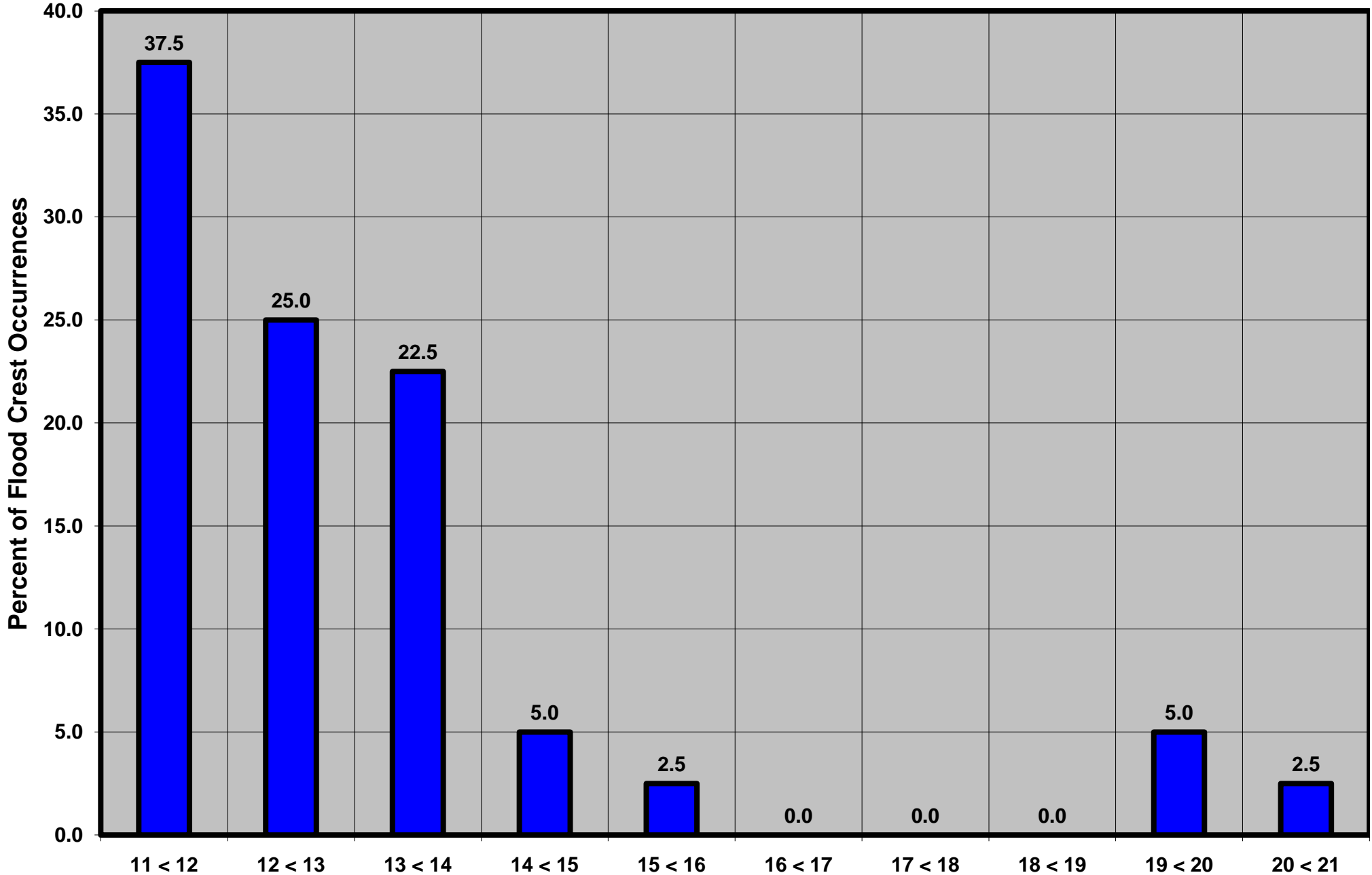
Tunkhannock Creek near Tunkhannock, PA

Lon = 75 53 42

Flood Stage = 11 ft

Period of Record 1938 to Present

Floods = 40



Drainage Area = 383 sq mi

Gage Datum = 610.10 ft MSL

Height Above Flood Stage (ft)

See Forecast Point Floods for more Information.

Tunkhannock Creek Basin

Wyoming County