

Cumulative Flood Crest Percentages by One Foot Intervals

Lat = 41 15 03

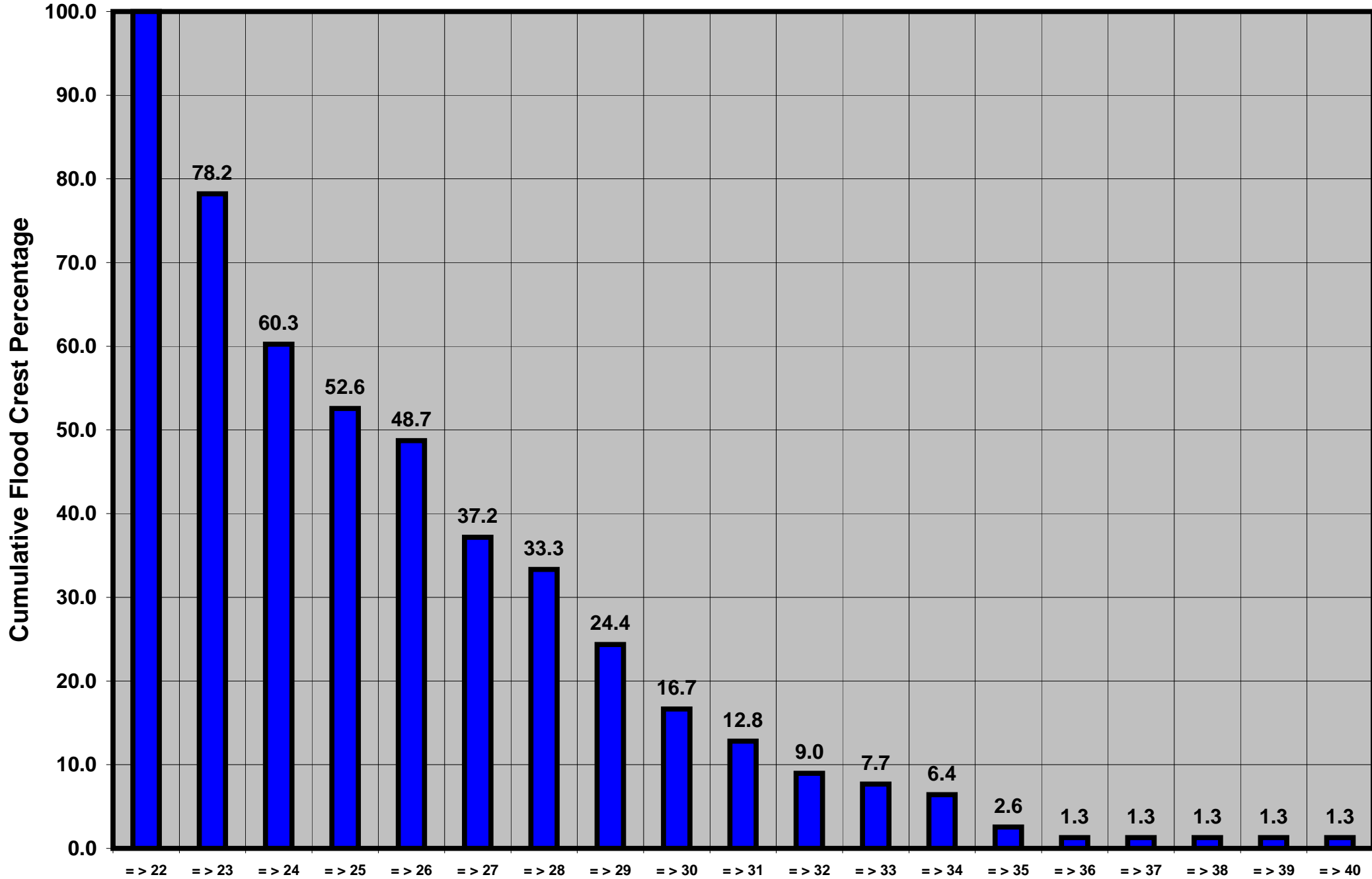
Susquehanna River at Wilkes-Barre, PA

Lon = 75 52 52

Flood Stage = 22 ft

Period of Record 1899 - 2008

Floods = 78



Drainage Area = 9,960 sq mi

Gage Datum = 510.86 ft MSL

Height Above Flood Stage (ft)

See Forecast Point Floods for more Information.

Susquehanna Basin (Main stem)

Luzerne County