

# Percent of Flood Crest Occurrences by One Foot Intervals

Lat = 42 17 29

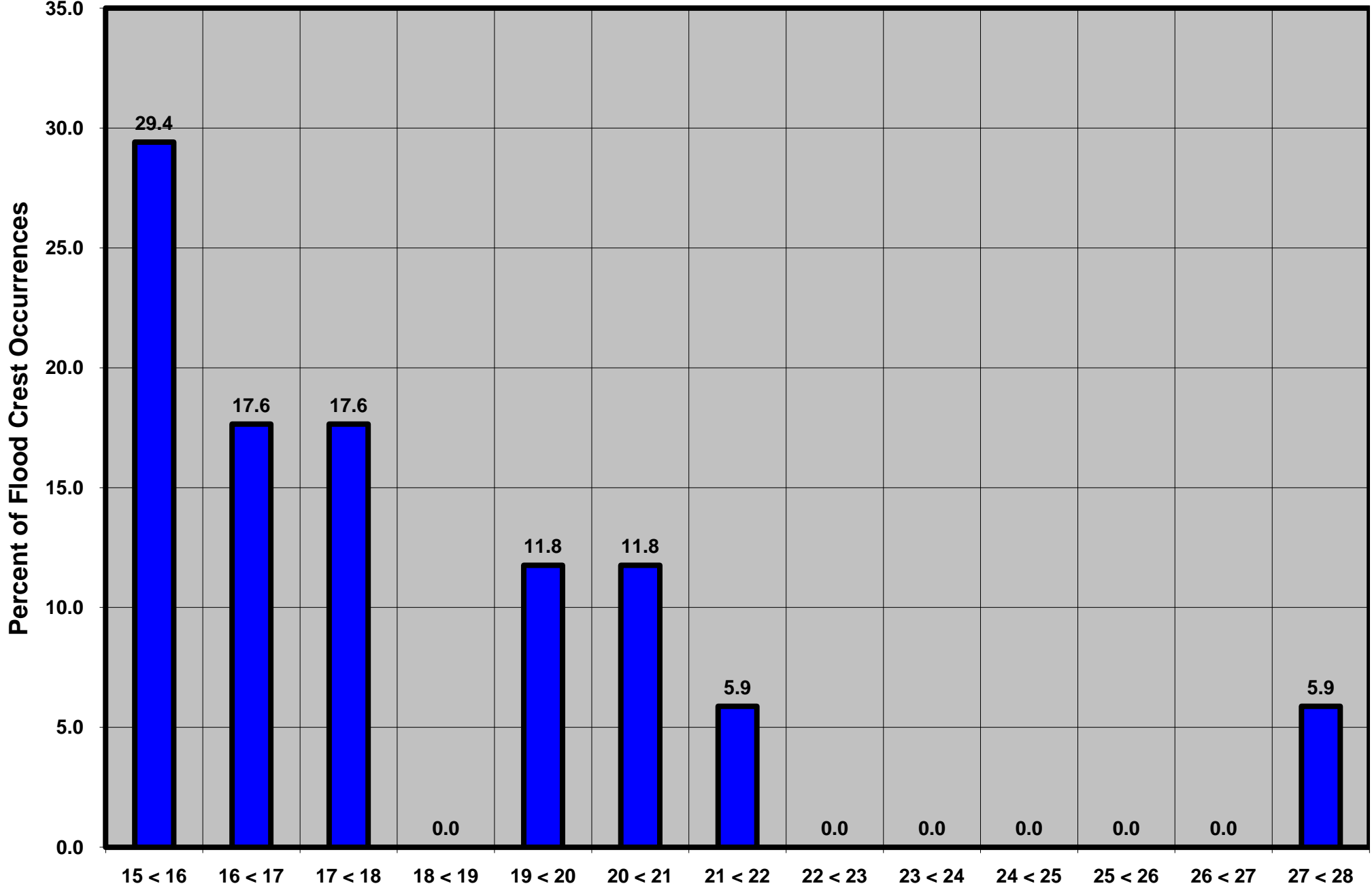
Susquehanna River at Bainbridge, NY

Lon = 75 28 36

Flood Stage = 15 ft

Period of Record 1987 to Present

Floods = 17



Drainage Area = 1,610 sq mi

Gage Datum = 965.55 ft MSL

Height Above Flood Stage (ft)

See Forecast Point Floods for more Information.

Susquehanna Basin (North branch)

Chenango County