

Percent of Flood Crest Occurrences by One Foot Intervals

Lat = 42 13 05

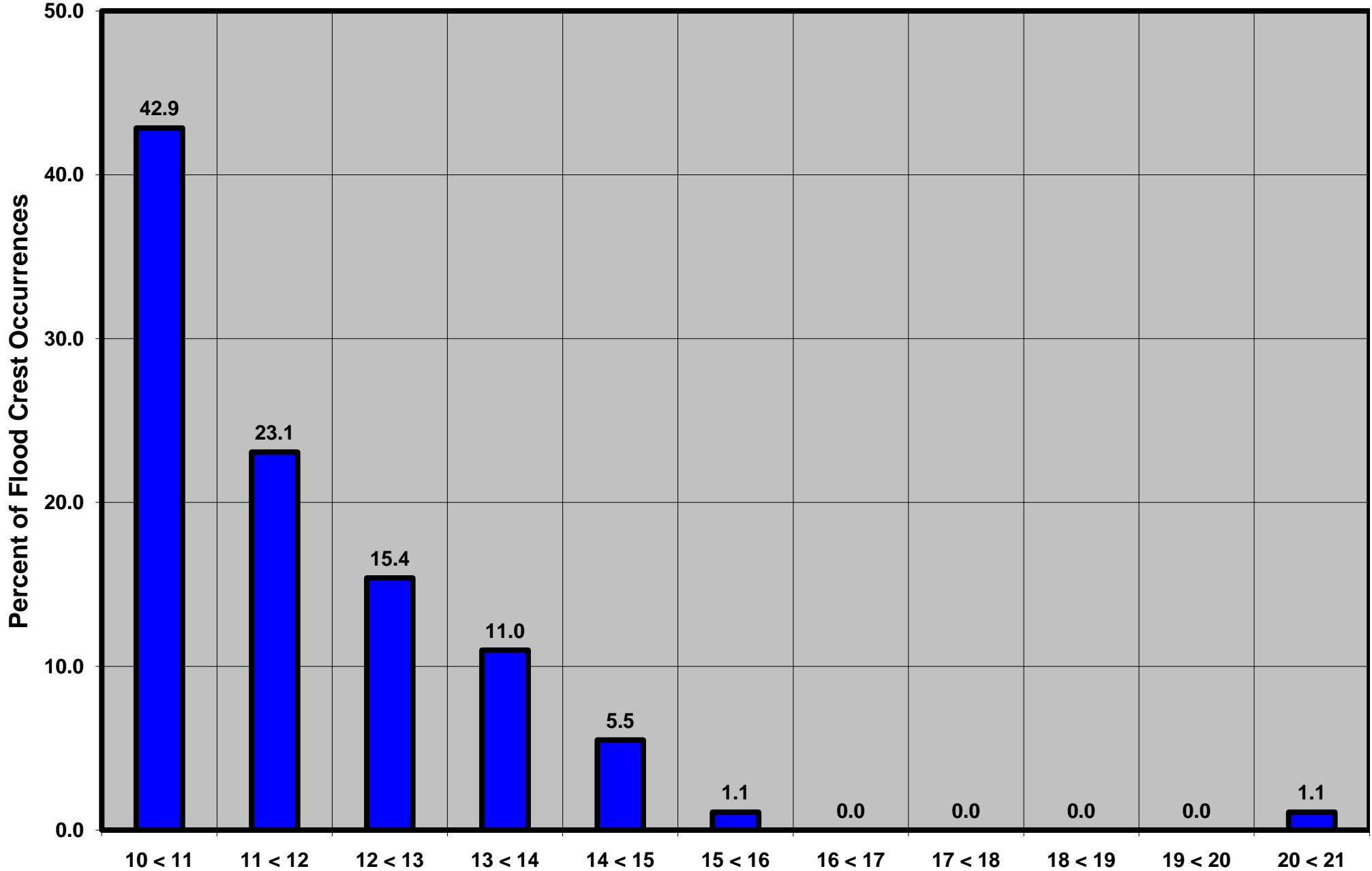
Chenango River near Chenango Forks, NY

Lon = 75 50 55

Flood Stage = 10 ft

Period of Record 1912 to Present

Floods = 91



Drainage Area = 1,483 sq mi

Gage Datum = 871.63 ft MSL

Height Above Flood Stage (ft)

See Forecast Point Floods for more Information.

Susquehanna Basin (North branch)

Broome County