

# Cumulative Flood Crest Percentages by One Foot Intervals

Lat = 42 32 28

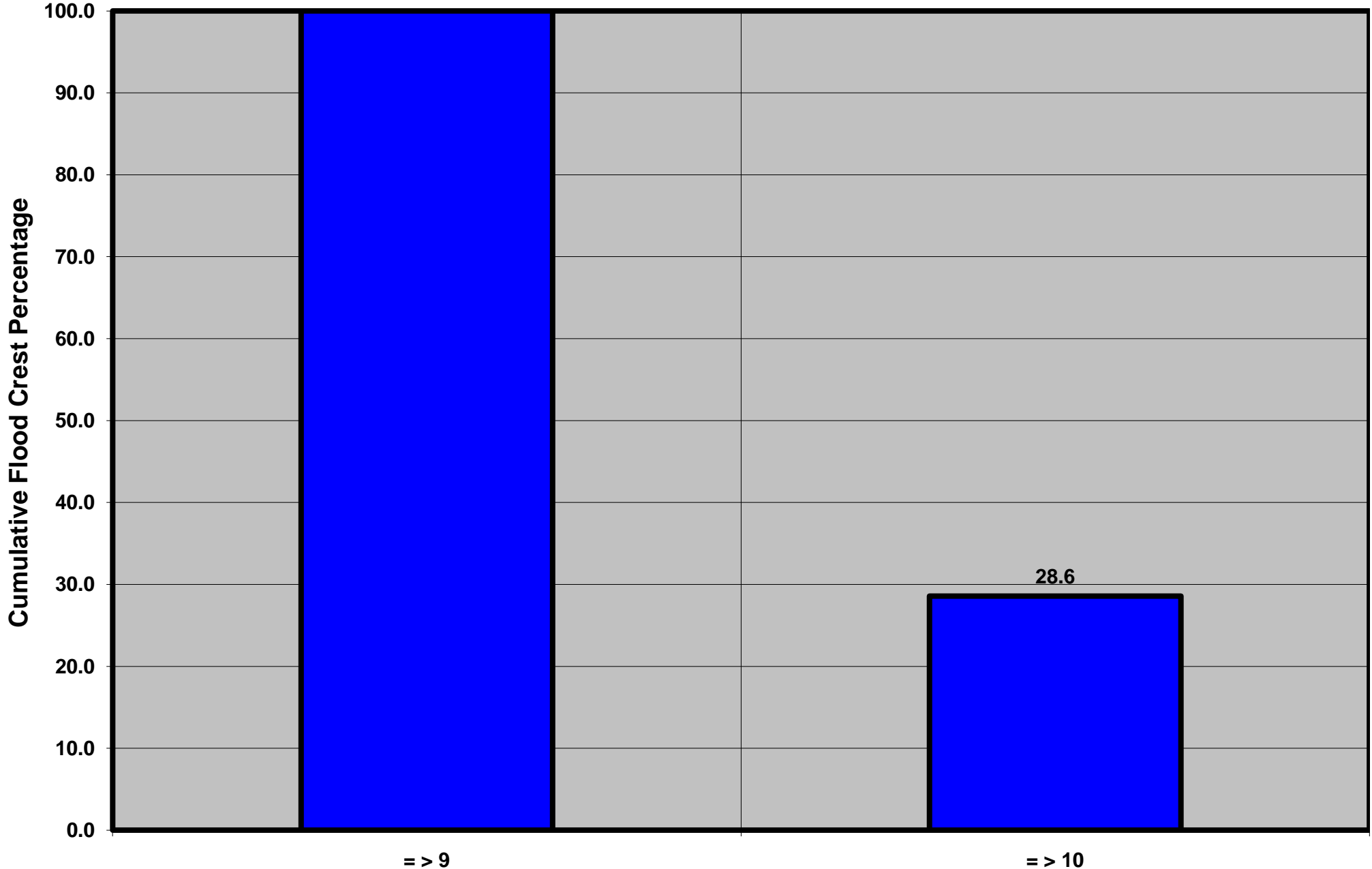
Otselic River at Cincinnatus, NY

Lon = 75 54 00

Flood Stage = 9 ft

Period of Record 1969 to Present

Floods = 14



Drainage Area = 147 sq mi

Height Above Flood Stage (ft)

Susquehanna Basin (North branch)

Gage Datum = 1,031.67 ft MSL

See Forecast Point Floods for more Information.

Cortland County