

Percent of Flood Crest Occurrences by One Foot Intervals

Lat = 42 02 07

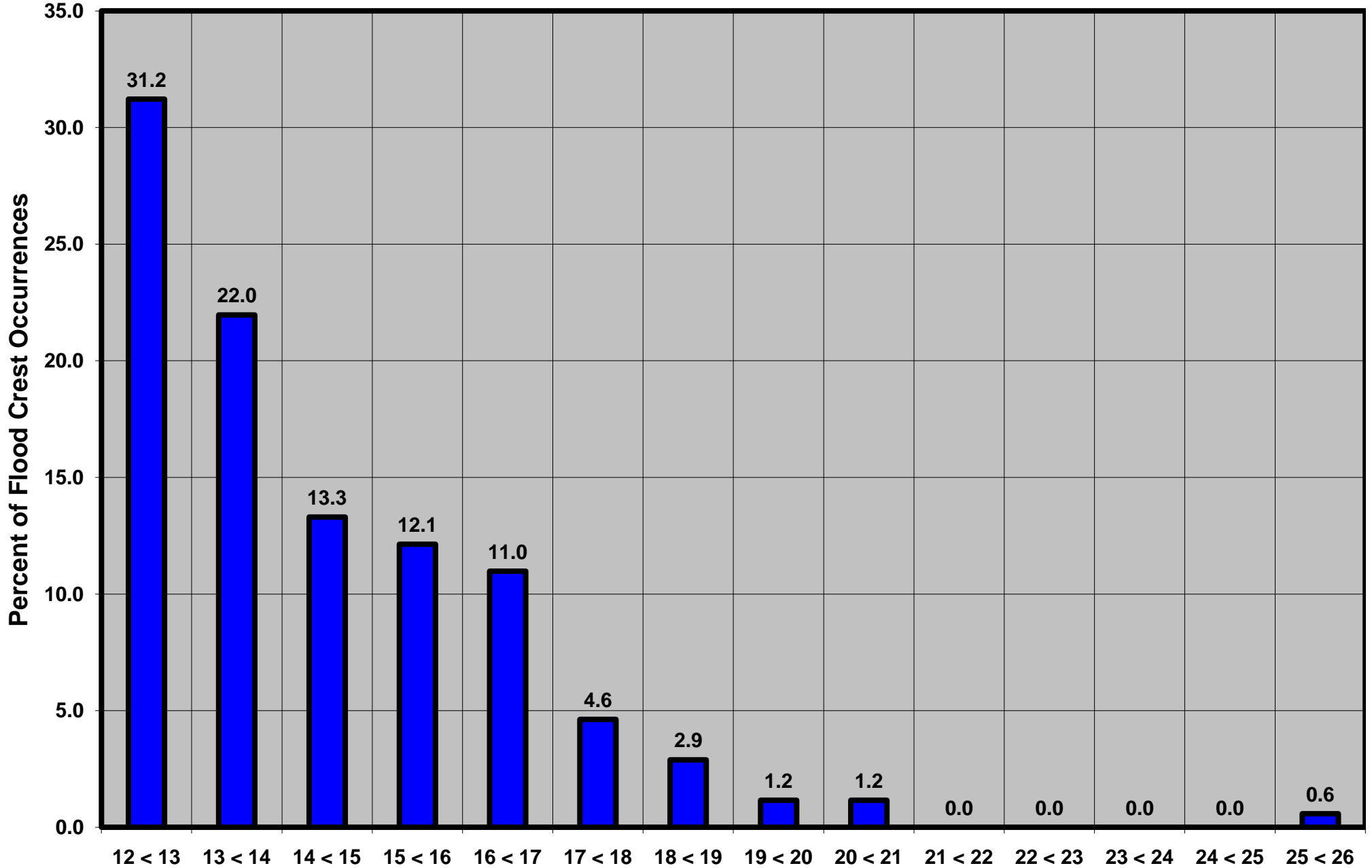
Susquehanna River at Conklin, NY

Lon = 75 48 12

Flood Stage = 12 ft

Period of Record 1913 to Present

Floods = 173



Drainage Area = 2,232 sq mi

Gage Datum = 841.04 ft MSL

Height Above Flood Stage (ft)

See Forecast Point Floods for more Information.

Susquehanna Basin (North branch)

Broome County