

Flood Crest Occurrences by One Foot Intervals

Lat = 42 36 10

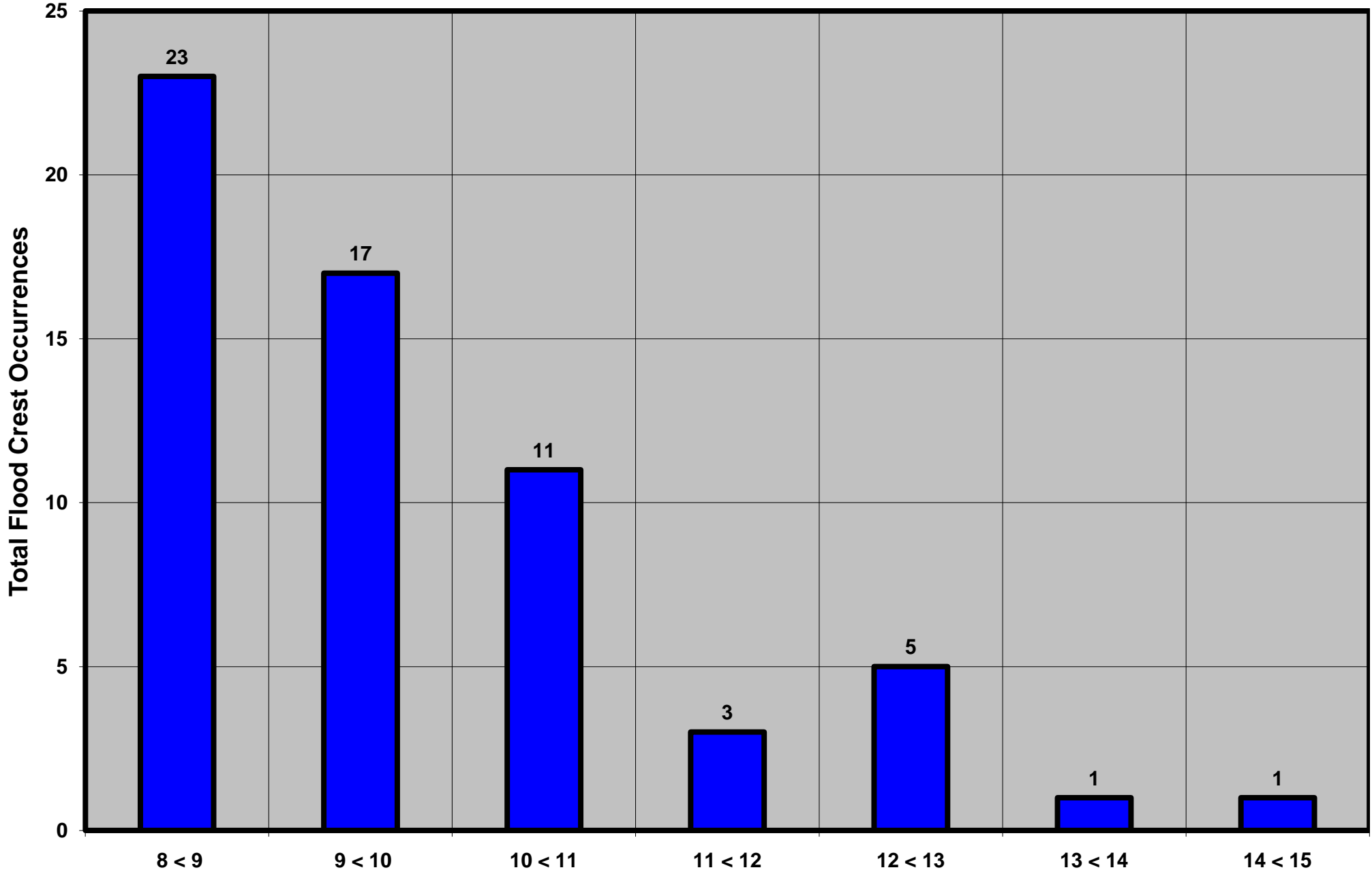
Tioughnioga River at Cortland, NY

Lon = 76 09 35

Flood Stage = 8 ft

Period of Record 1963 to Present

Floods = 61



Drainage Area = 292 sq mi
Gage Datum = 1,084.92 ft MSL

Height Above Flood Stage (ft)
See Forecast Point Floods for more Information.

Susquehanna Basin (North branch)
Cortland County