

# Percent of Flood Crest Occurrences by One Foot Intervals

Lat = 42 19 28

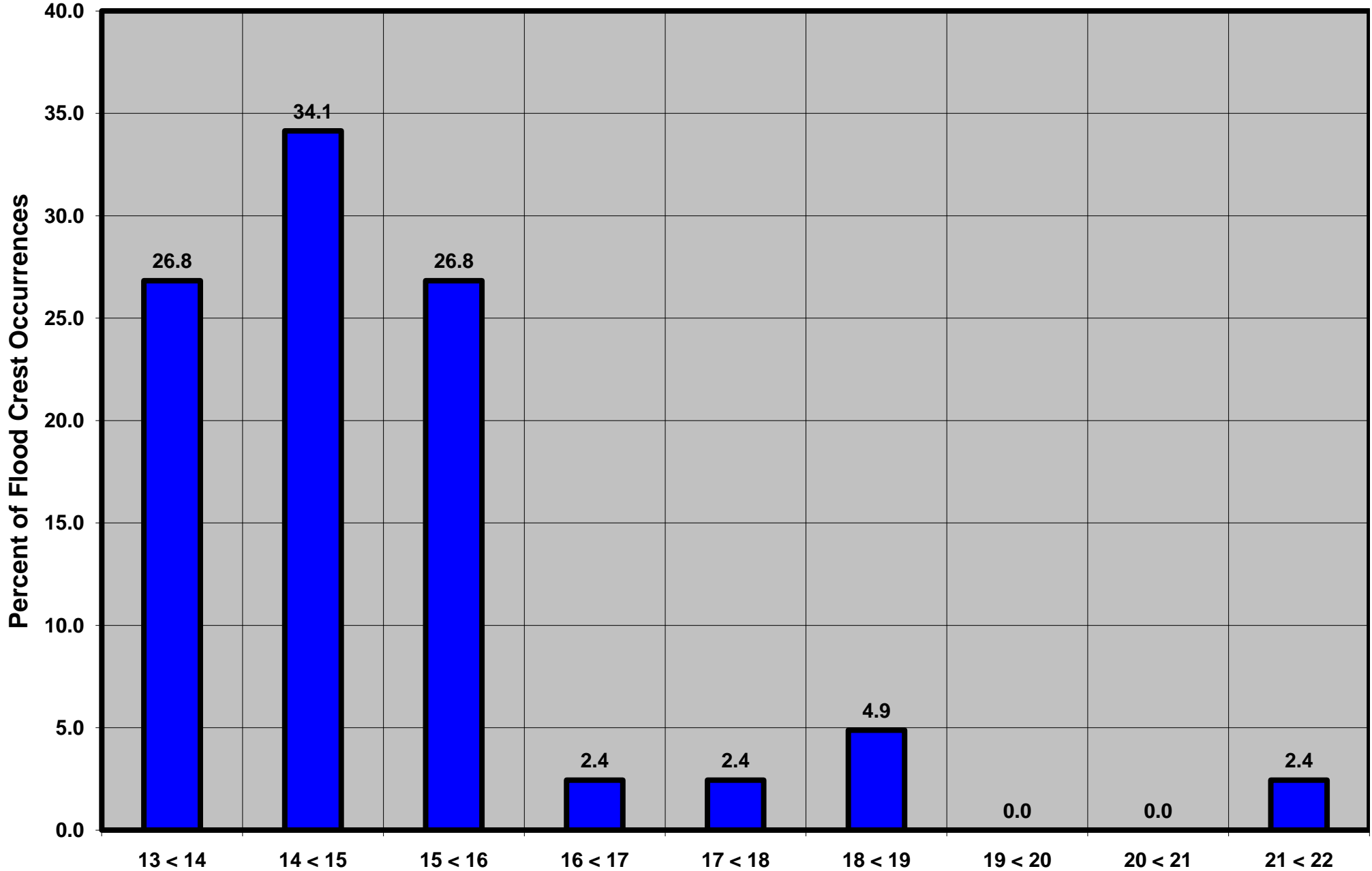
Chenango River at Greene, NY

Lon = 75 46 18

Flood Stage = 13 ft

Period of Record 1937 to Present

Floods = 41



Drainage Area = 593 sq mi  
Gage Datum = 892.58 ft MSL

Height Above Flood Stage (ft)  
See Forecast Point Floods for more Information.

Susquehanna Basin (North branch)  
Chenango County