

Cumulative Flood Crest Percentages by One Foot Intervals

Lat = 42 06 05

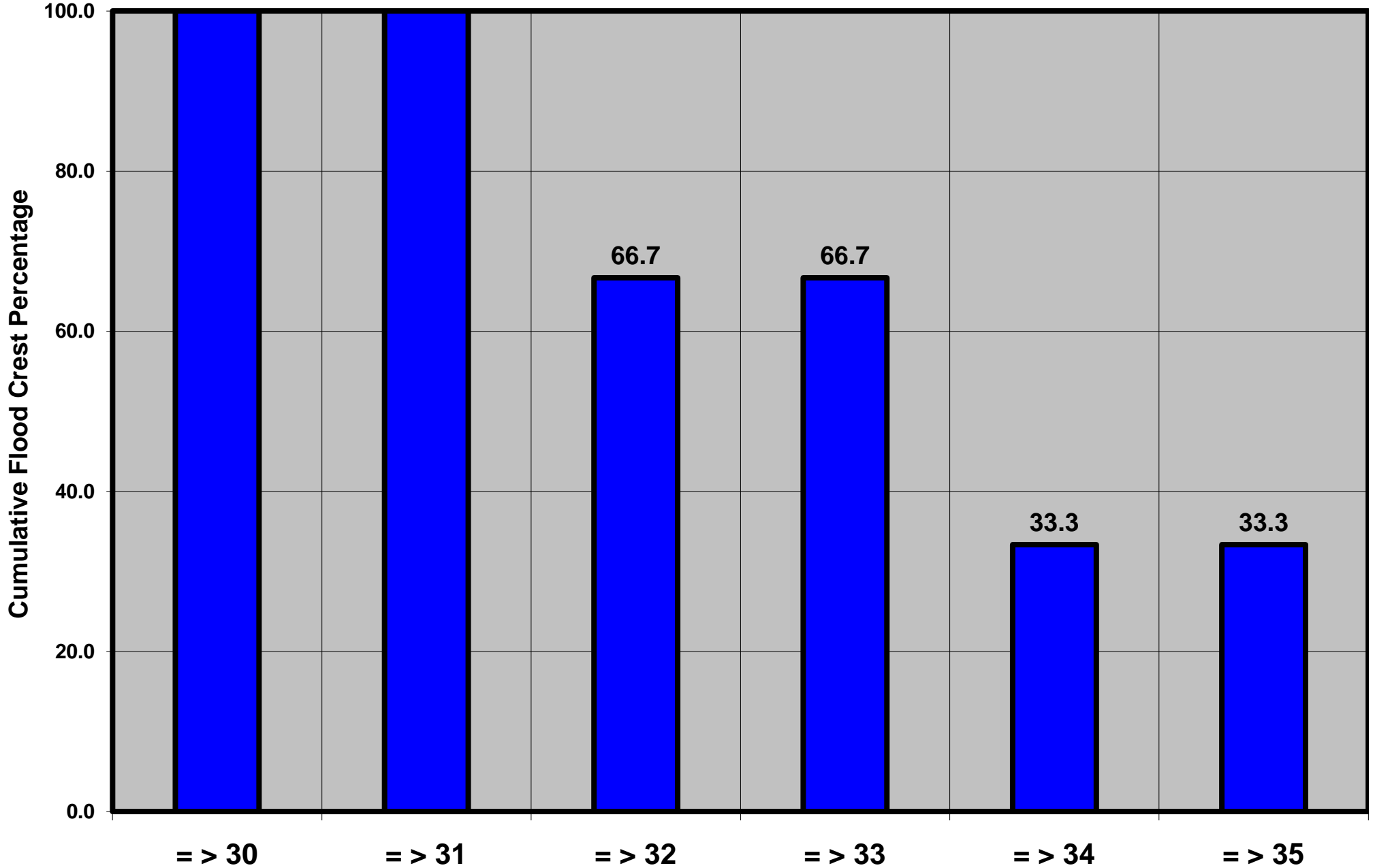
Susquehanna River at Owego, NY

Lon = 76 15 41

Flood Stage = 30 ft

Period of Record 1998 to Present

Floods = 3



Drainage Area = 4,216 sq mi
Gage Datum = 766.44 ft MSL

Height Above Flood Stage (ft)
See Forecast Point Floods for more Information.

Susquehanna Basin (North branch)
Tioga County