

Percent of Flood Crest Occurrences by One Foot Intervals

Lat = 42 40 43

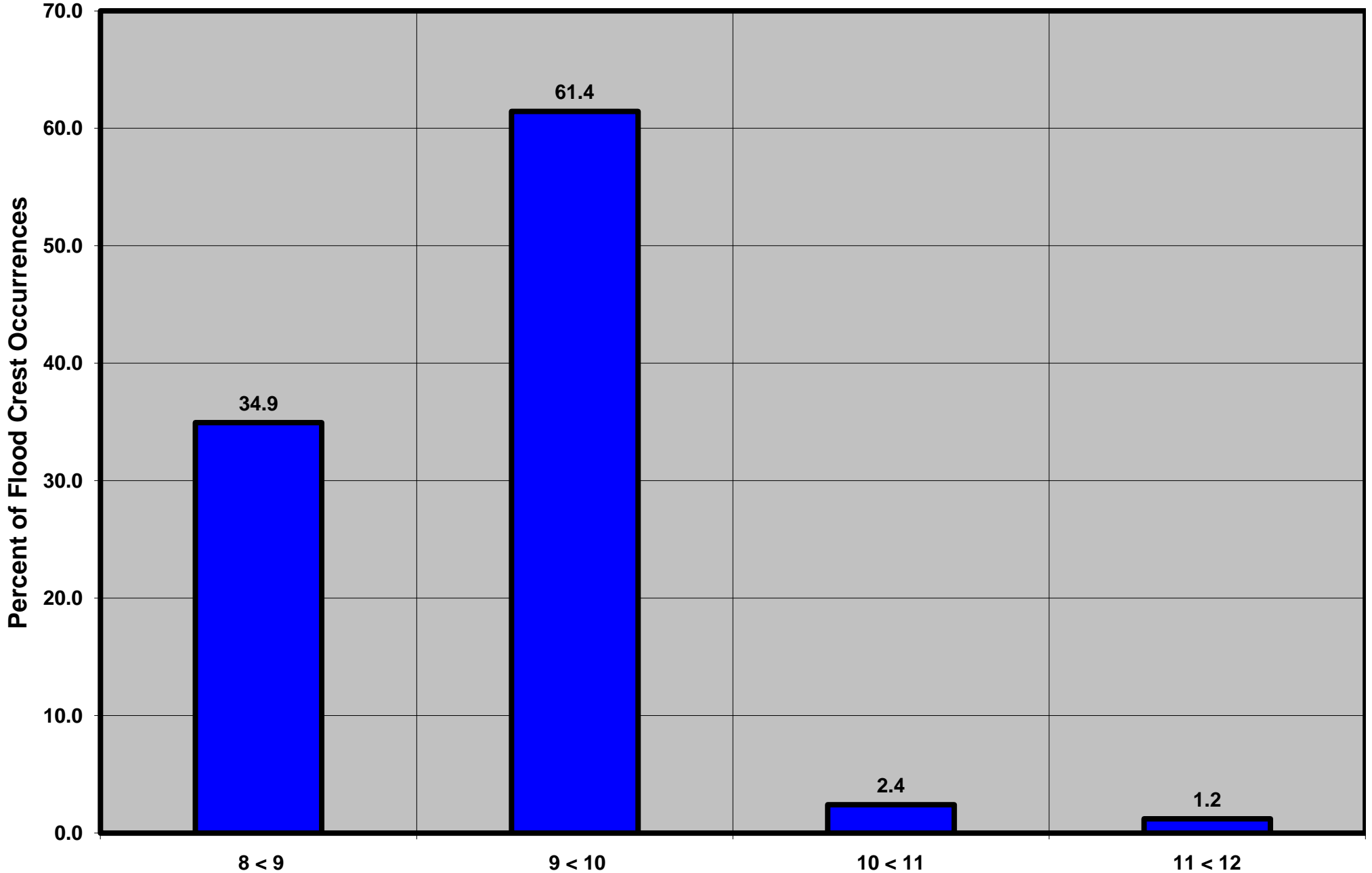
Chenango River at Sherburne, NY

Lon = 75 30 39

Flood Stage = 8.5 ft

Period of Record 1938 to Present

Floods = 83



Drainage Area = 263 sq mi

Height Above Flood Stage (ft)

Susquehanna Basin (North branch)

Gage Datum = 1,037.16 ft MSL

See Forecast Point Floods for more Information.

Chenango County