

# Cumulative Flood Crest Percentages by One Foot Intervals

Lat = 42 19 17

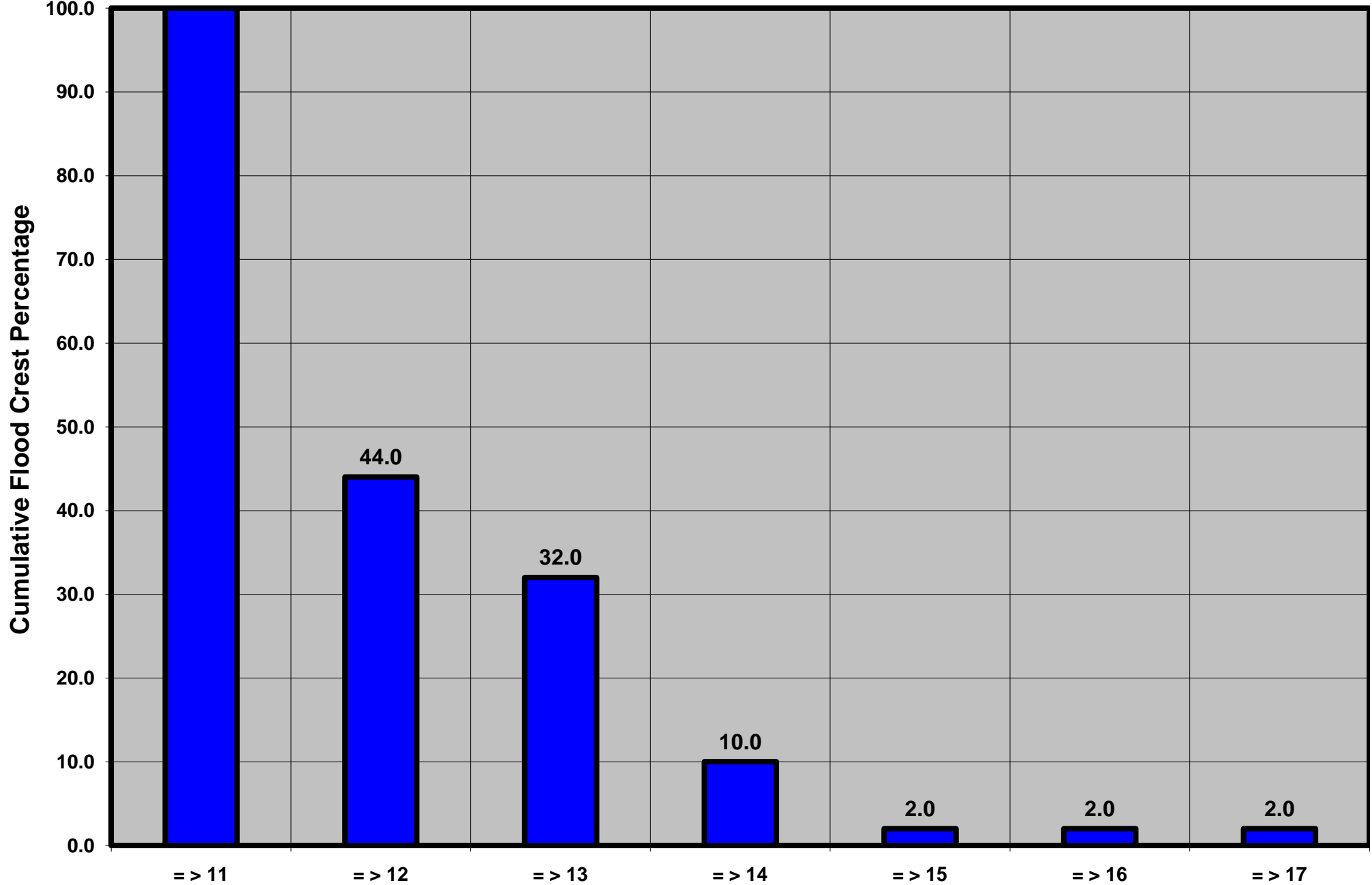
Susquehanna River at Unadilla, NY

Lon = 75 19 01

Flood Stage = 11 ft

Period of Record 1938 to Present

Floods = 50



Drainage Area = 982 sq mi  
Gage Datum = 997.25 ft MSL

See Forecast Point Floods for more Information.

Susquehanna Basin (North branch)  
Otsego County