

Cumulative Flood Crest Percentages by One Foot Intervals

Lat = 41 04 51

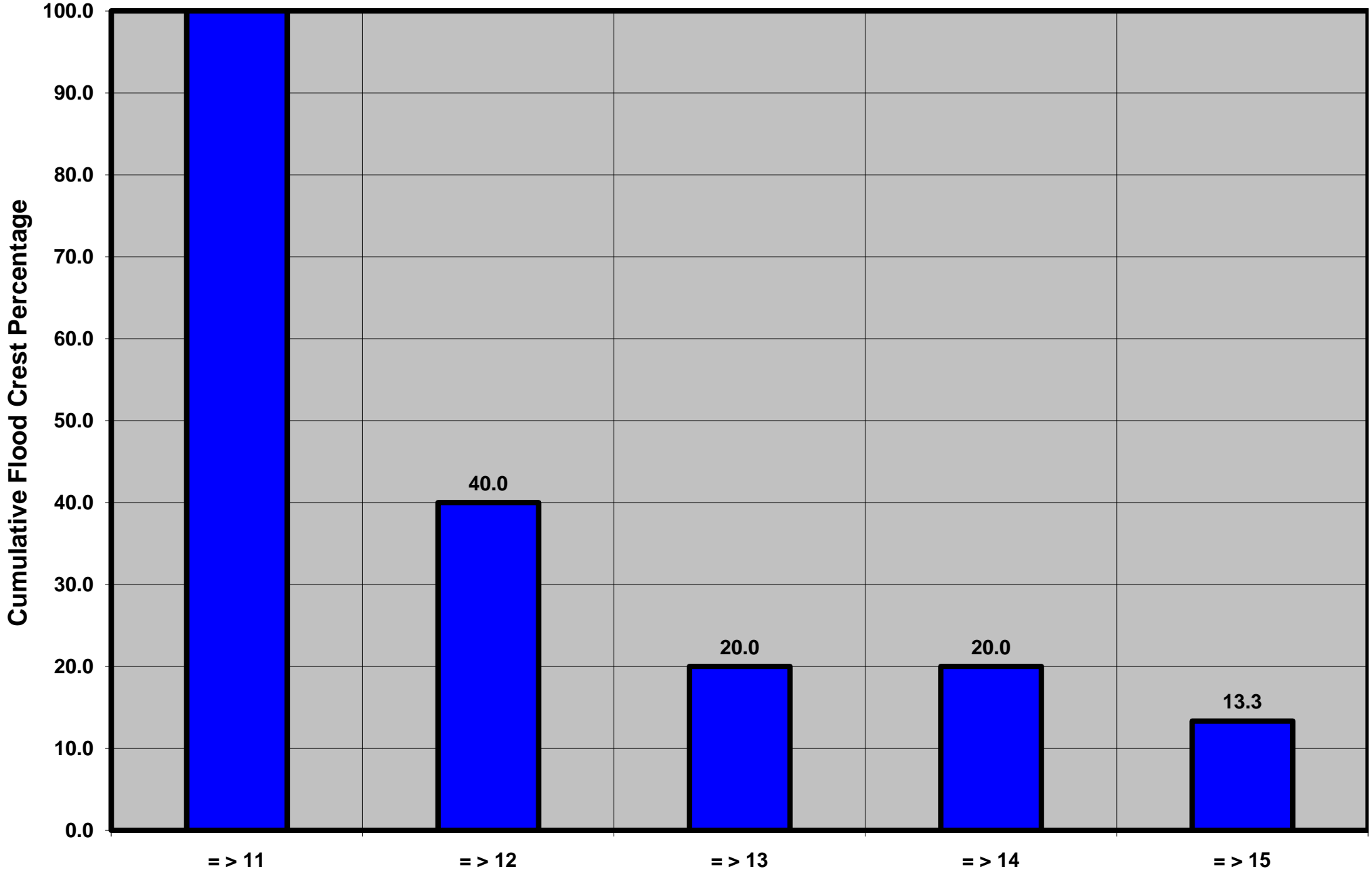
Bald Eagle Creek near Beech Creek Station, PA

Lon = 77 32 59

Flood Stage = 11 ft

Period 1984 to Present

Floods = 15



Drainage Area = 562 sq mi
Gage Datum = 560.00 ft MSL

Height Above Flood Stage (ft)
See Forecast Point Floods for more Information.

West Branch Susquehanna Basin
Clinton County