

# Cumulative Flood Crest Percentages by One Foot Intervals

Lat = 41 31 18

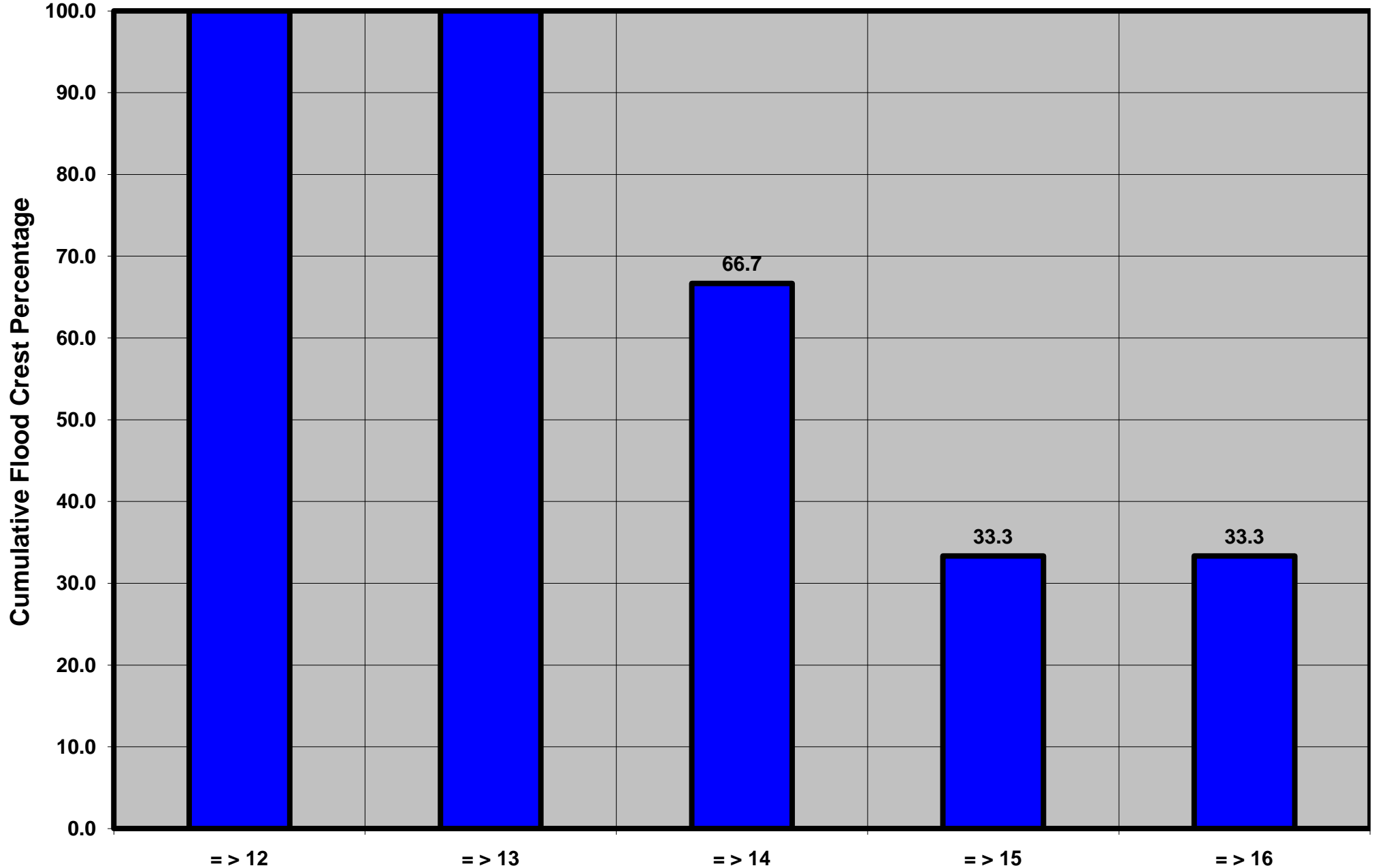
Pine Creek at Cedar Run, PA

Lon = 77 26 52

Flood Stage = 12 ft

Period of Record 1930 to Present

Floods = 3



Drainage Area = 604 sq mi  
Gage Datum = 780.36 ft MSL

Height Above Flood Stage (ft)  
See Forecast Point Floods for more Information.

West Branch Susquehanna Basin  
Lycoming County