

# Cumulative Flood Crest Percentages by One Foot Intervals

Lat = 41 12 08

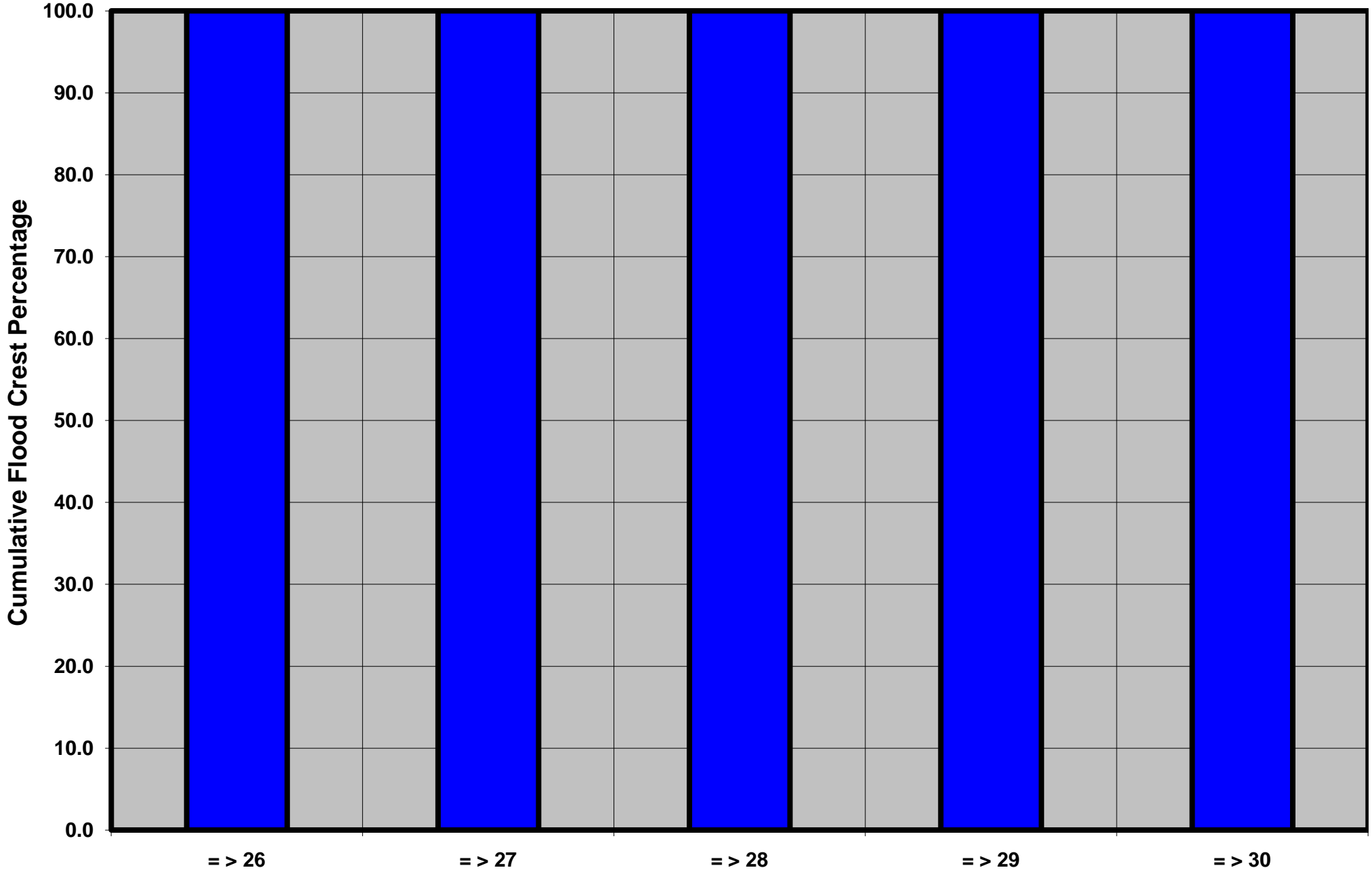
W. Branch Susquehanna River at Jersey Shore, PA

Lon = 77 07 57

Flood Stage = 26 ft

Period of Record 2000 to Present

Floods = 1



Drainage Area = 470 sq mi

Height Above Flood Stage (ft)

West Branch Susquehanna Basin

Gage Datum = 1,1016.34 ft MSL See Forecast Point Floods for more Information.

Lycoming County