

# Percent of Flood Crest Occurrences by One Foot Intervals

Lat = 40 58 05

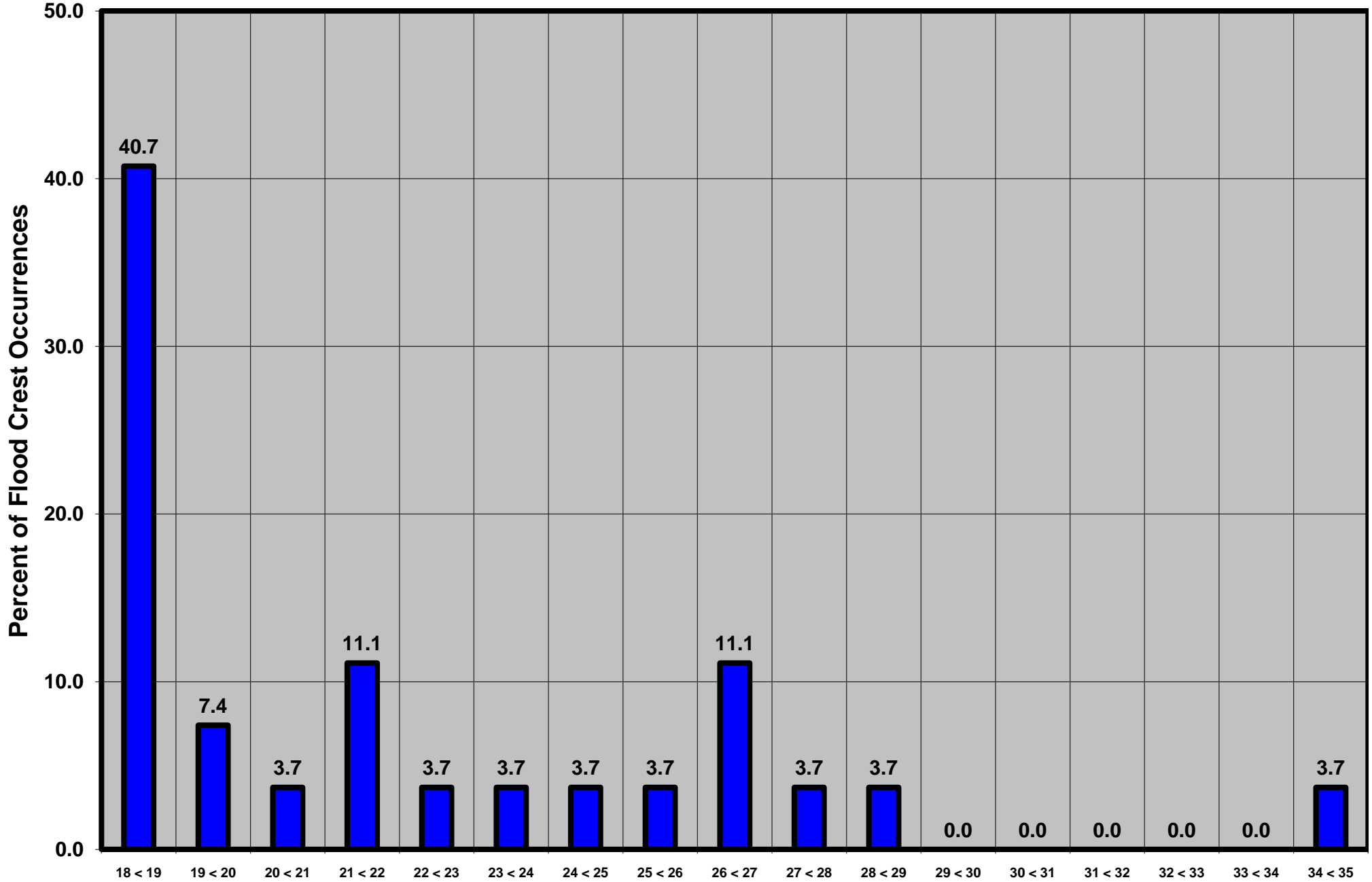
W Branch Susquehanna River at Lewisburg, PA

Lon = 76 52 25

Flood Stage = 18 ft

Period of Record 1940 - Present

Floods = 27



Drainage Area = 6,847 sq mi

Gage Datum = 428.20 ft MSL

Height Above Flood Stage (ft)

See Forecast Point Floods for more Information.

West Branch Susquehanna Basin

Northumberland County