

# Percent of Flood Crest Occurrences by One Ft Intervals

Lat = 41 08 17

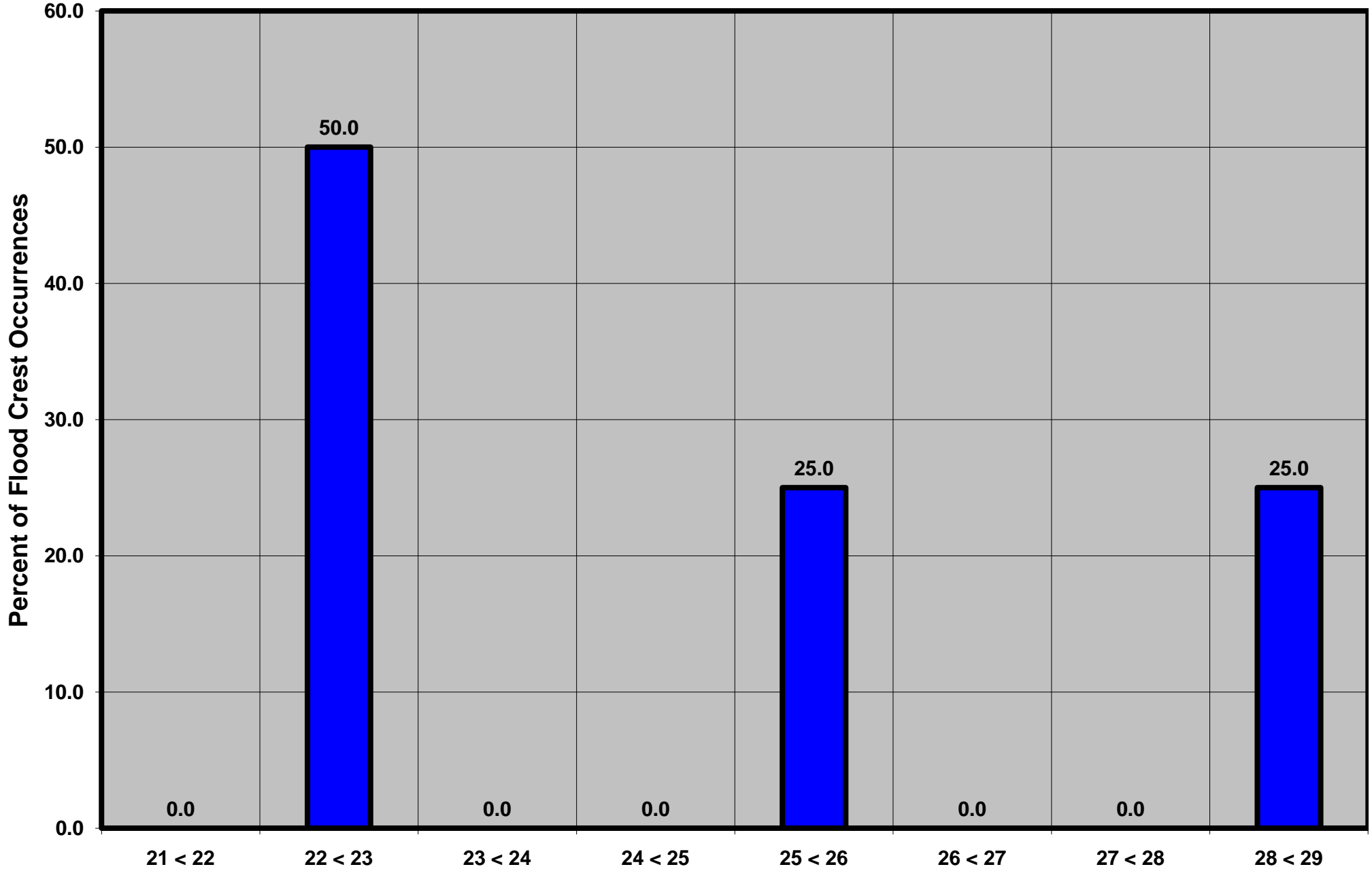
West Branch Susquehanna River at Lock Haven, PA

Lon = 77 26 32

Flood Stage = 21 ft

Period of Record 1974 to Present

Floods = 4



Drainage Area = 3,345 sq mi

Gage Datum = 534.41 ft MSL

Height Above Flood Stage (ft)

See Forecast Point Floods for more Information.

West Branch Susquehanna Basin

Clinton County