

# Cumulative Flood Crest Percentages by One Foot Intervals

Lat = 41 19 30

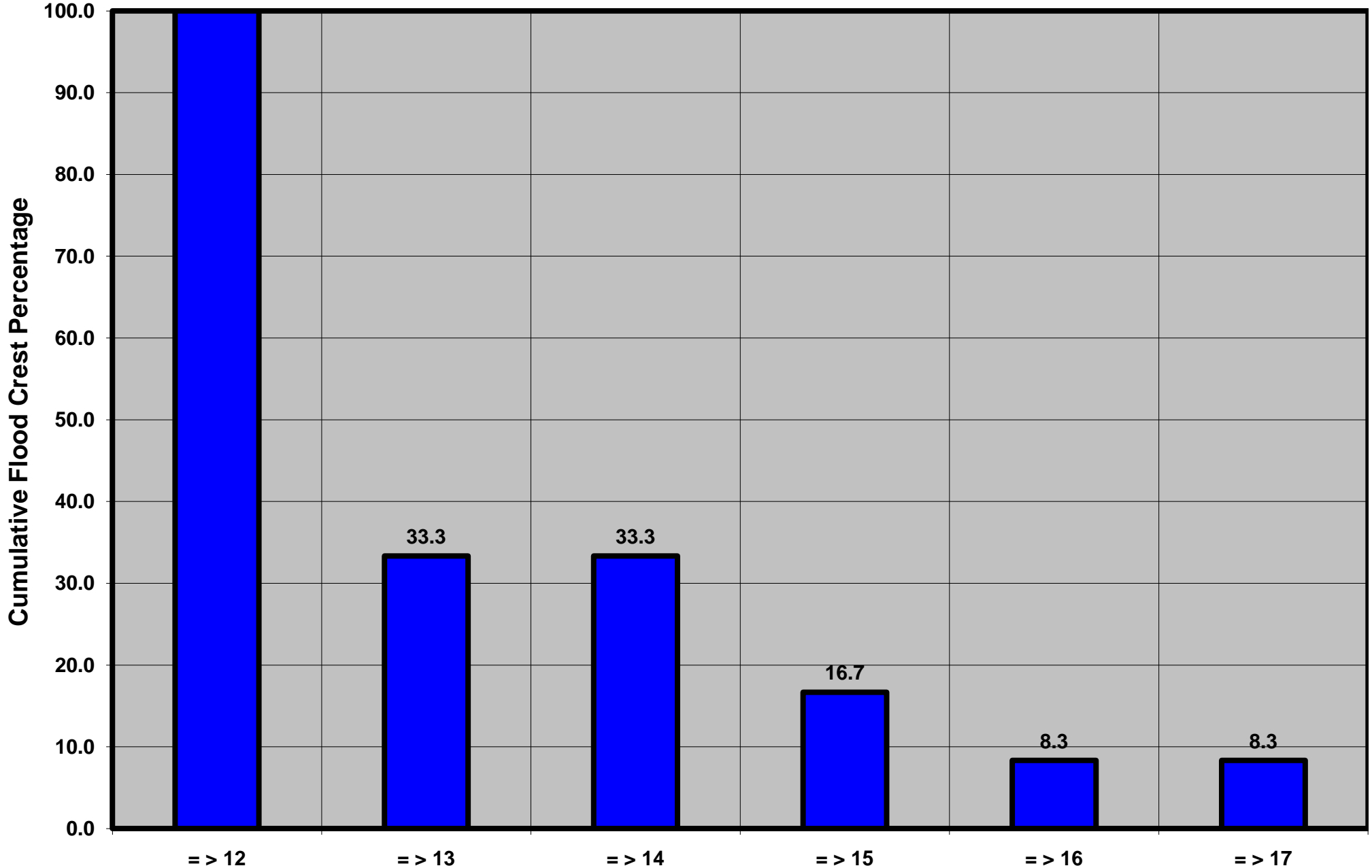
Loyalsock Creek at Loyalsockville, PA

Lon = 76 54 46

Flood Stage = 12 ft

Period of Record 1926 to Present

Floods = 12



Drainage Area = 435 sq mi  
Gage Datum = 586.33 ft MSL

Height Above Flood Stage (ft)  
See Forecast Point Floods for more Information.

West Branch Susquehanna Basin  
Lycoming County