

Cumulative Flood Crest Percentages by One Foot Intervals

Lat = 41 01 07

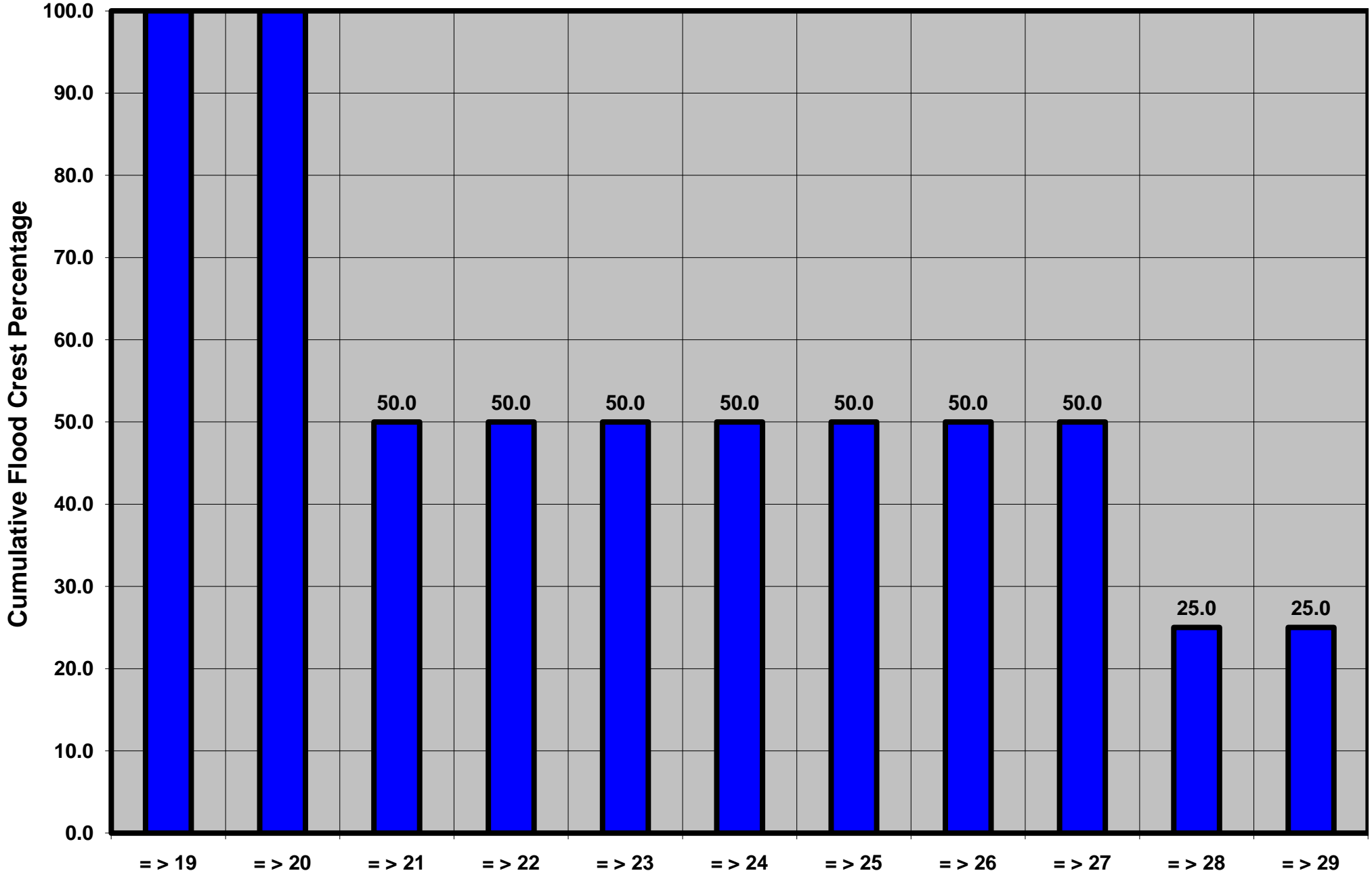
West Branch Susquehanna River at Milton (West), PA

Lon = 76 51 55

Flood Stage = 19 ft

Period 1994 to Present

Floods = 4



Drainage Area = 6,825 sq mi

Gage Datum = 432.45 ft MSL

Height Above Flood Stage (ft)

See Forecast Point Floods for more Information.

West Branch Susquehanna Basin

Union County