

Cumulative Flood Crest Percentages by One Foot Intervals

Lat = 41 12 27

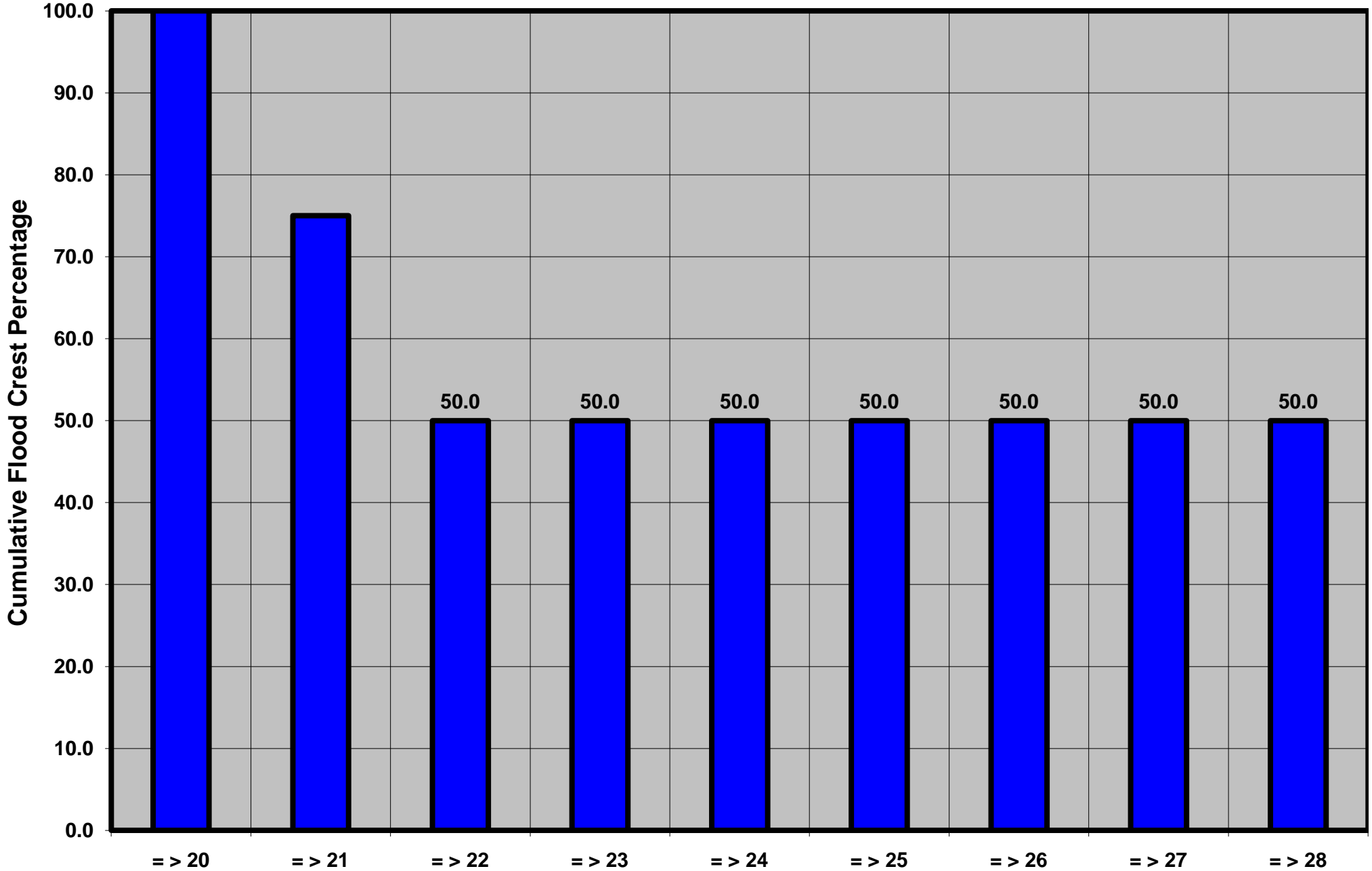
West Branch Susquehanna River at Muncy, PA

Lon = 76 45 09

Flood Stage = 20 ft

Period of Record 1990 to Present

Floods = 4



Drainage Area = 209 sq mi
Gage Datum = 490.00 ft MSL

Height Above Flood Stage (ft)
See Forecast Point Floods for more Information.

West Branch Susquehanna Basin
Lycoming County