

Cumulative Flood Crest Percentages by One Foot Intervals

Lat = 41 19 28

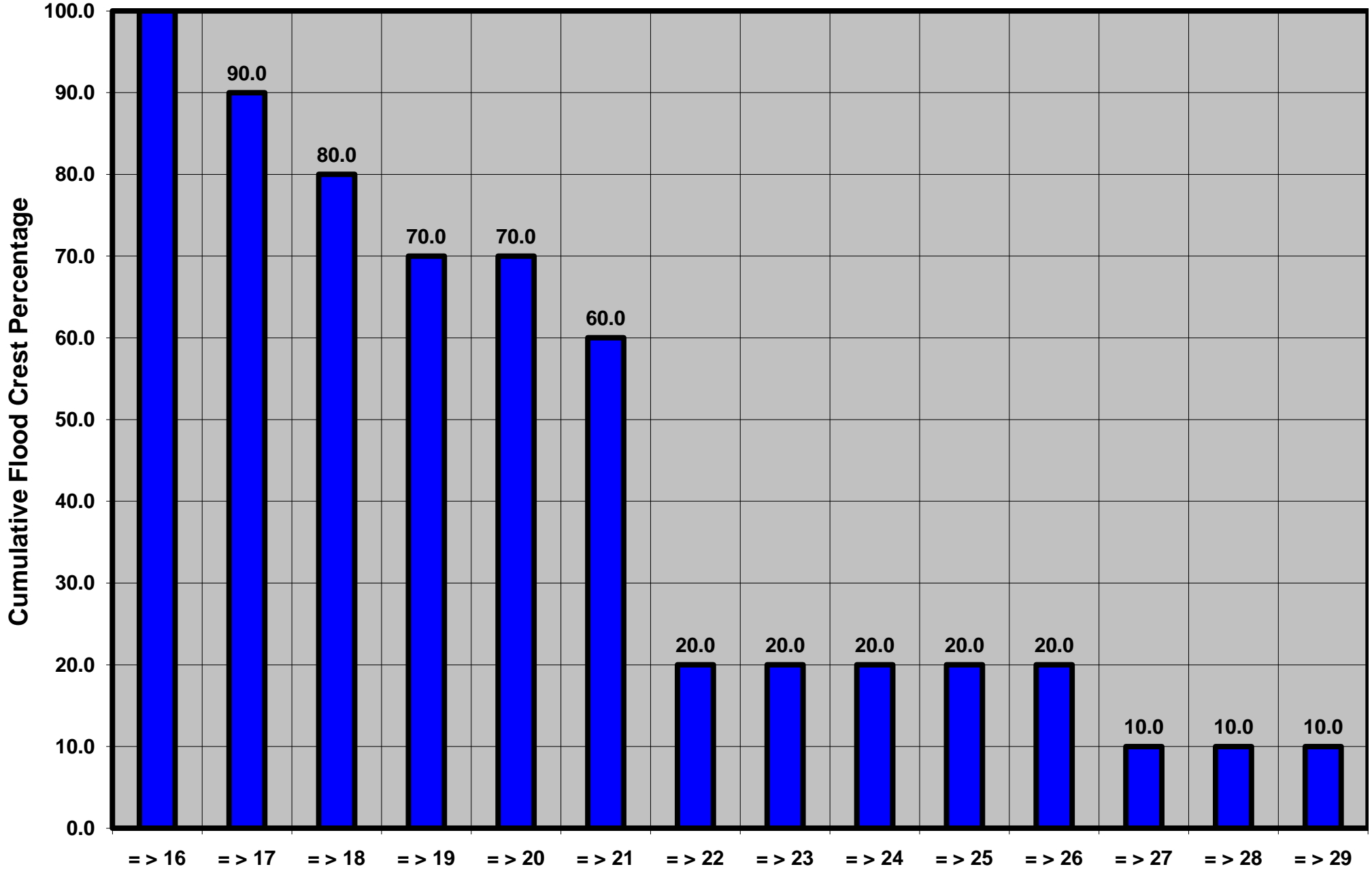
West Branch Susquehanna River at Renovo, PA

Lon = 77 45 03

Flood Stage = 16 ft

Period 1930 to Present

Floods = 10



Drainage Area = 2,975 sq mi

Gage Datum = 634.19 ft MSL

Height Above Flood Stage (ft)

See Forecast Point Floods for more Information.

West Branch Susquehanna Basin

Clinton County