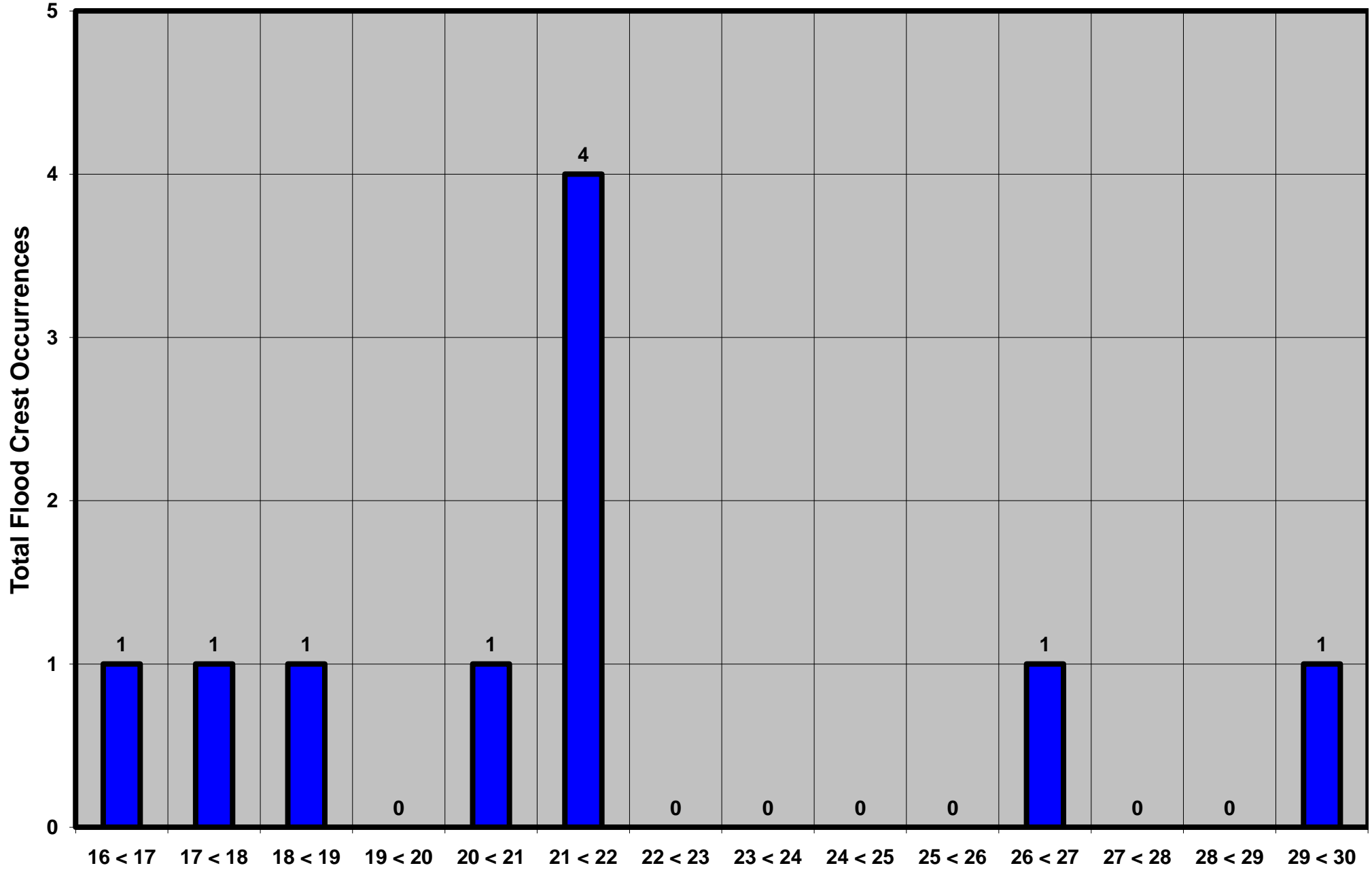


**Flood Crest Occurrences by One Foot Intervals**  
**West Branch Susquehanna River at Renovo, PA**  
**Period of Record 1930 to Present**

**Lat = 41 19 28**  
**Flood Stage = 16 ft**

**Lon = 77 45 03**  
**Floods = 10**



**Drainage Area = 2,975 sq mi**  
**Gage Datum = 634.19 ft MSL**

**Height Above Flood Stage (ft)**  
**See Forecast Point Floods for more Information.**

**West Branch Susquehanna Basin**  
**Clinton County**